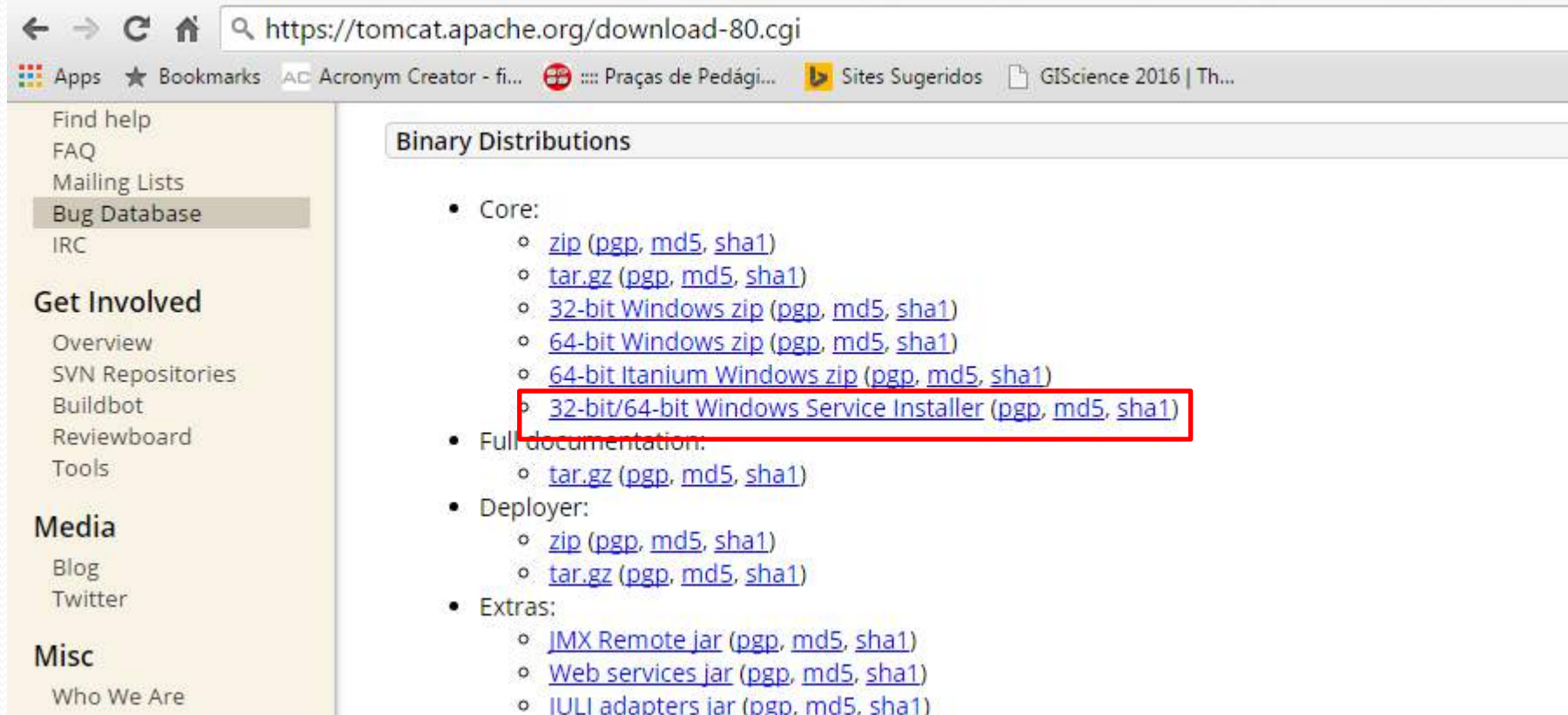


# Mondrian Tutorial Instalação

Anderson Chaves Carniel  
Prof. Dra. Cristina Dutra de Aguiar Ciferri

# Requisitos

- Instalação do Java JDK e JRE mais recentes
- Instalação do Tomcat Apache 8.0
  - <https://tomcat.apache.org/download-80.cgi>



The screenshot shows a web browser window with the address bar displaying <https://tomcat.apache.org/download-80.cgi>. The browser's tab bar shows several open tabs, including 'Apps', 'Bookmarks', 'Acronym Creator - fi...', 'Praças de Pedági...', 'Sites Sugeridos', and 'GIScience 2016 | Th...'. The left sidebar of the Tomcat website contains links such as 'Find help', 'FAQ', 'Mailing Lists', 'Bug Database', 'IRC', 'Get Involved', 'Media', and 'Misc'. The main content area is titled 'Binary Distributions' and lists various download options. A red rectangle highlights the link for '32-bit/64-bit Windows Service Installer (pgp, md5, sha1)'.

Binary Distributions

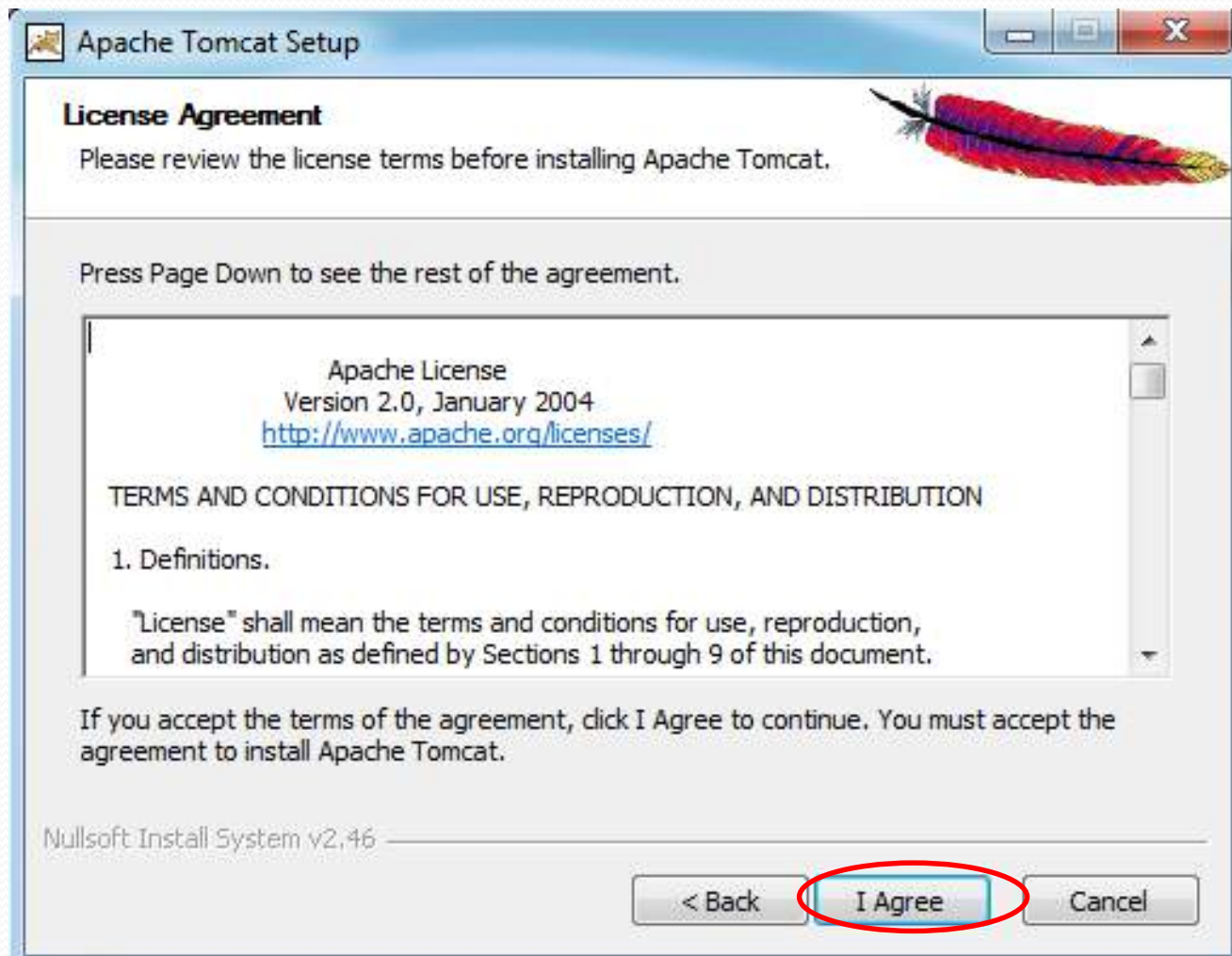
- Core:
  - [zip \(pgp, md5, sha1\)](#)
  - [tar.gz \(pgp, md5, sha1\)](#)
  - [32-bit Windows zip \(pgp, md5, sha1\)](#)
  - [64-bit Windows zip \(pgp, md5, sha1\)](#)
  - [64-bit Itanium Windows zip \(pgp, md5, sha1\)](#)
  - [32-bit/64-bit Windows Service Installer \(pgp, md5, sha1\)](#)
- Full documentation:
  - [tar.gz \(pgp, md5, sha1\)](#)
- Deployer:
  - [zip \(pgp, md5, sha1\)](#)
  - [tar.gz \(pgp, md5, sha1\)](#)
- Extras:
  - [JMX Remote jar \(pgp, md5, sha1\)](#)
  - [Web services jar \(pgp, md5, sha1\)](#)
  - [JULI adapters jar \(pgp, md5, sha1\)](#)

# Tutorial Instalação - Tomcat

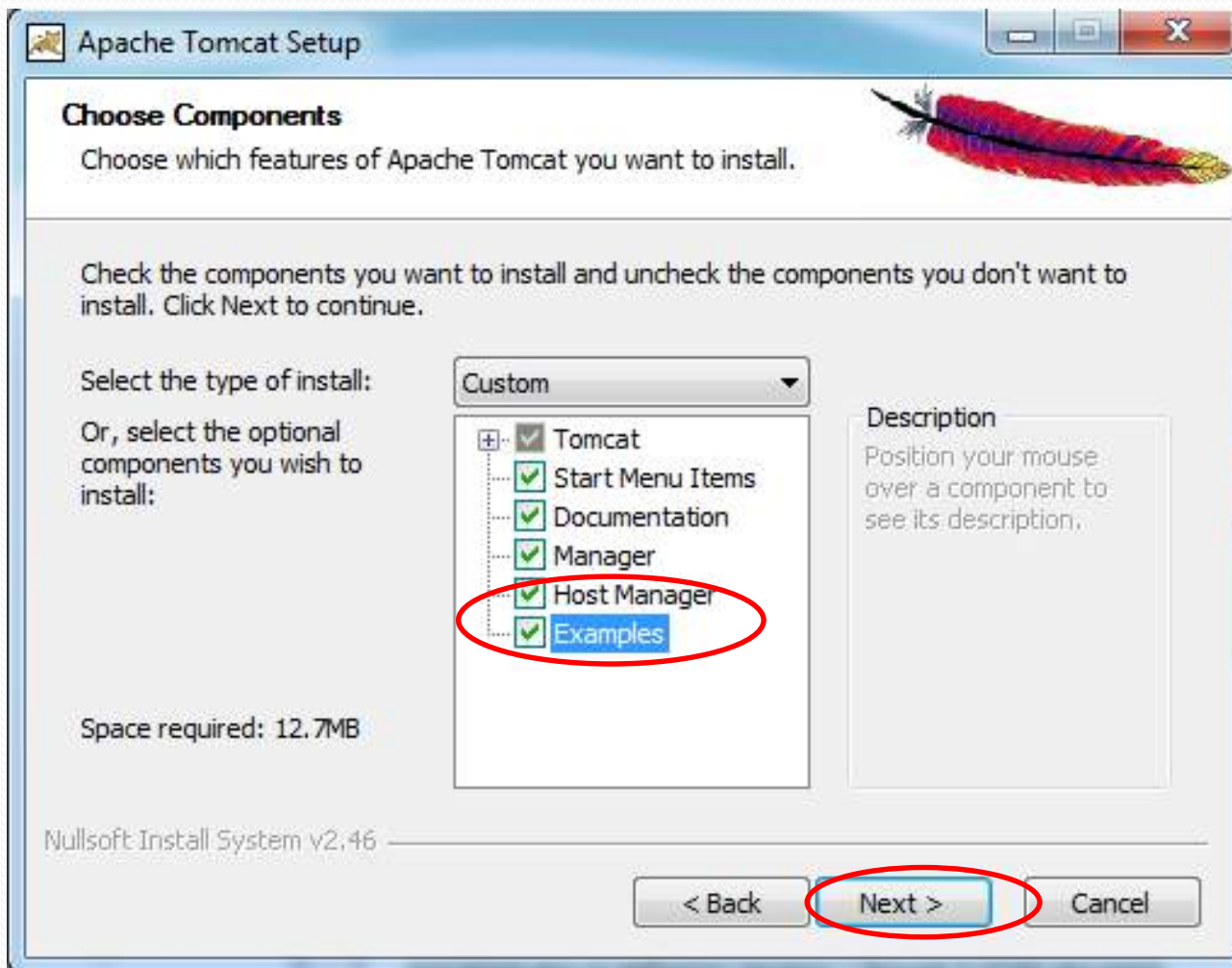
- Execute o arquivo **apache-tomcat-8.0.28.exe**



# Tutorial Instalação - Tomcat

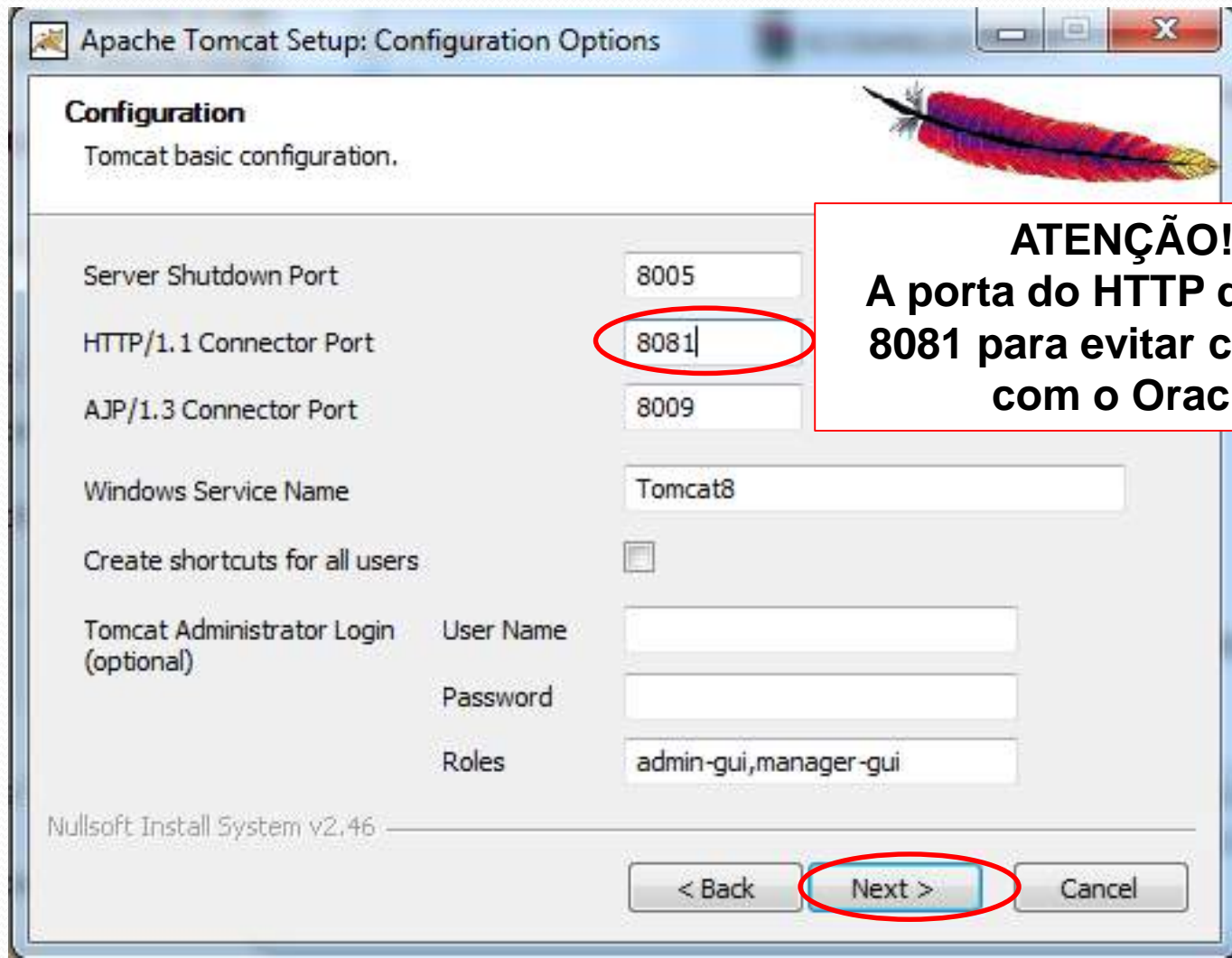


# Tutorial Instalação - Tomcat





# Tutorial Instalação - Tomcat



**Configuration**  
Tomcat basic configuration.

Server Shutdown Port: 8005

HTTP/1.1 Connector Port: 8081

AJP/1.3 Connector Port: 8009

Windows Service Name: Tomcat8

Create shortcuts for all users: ☐

Tomcat Administrator Login (optional):

User Name:

Password:

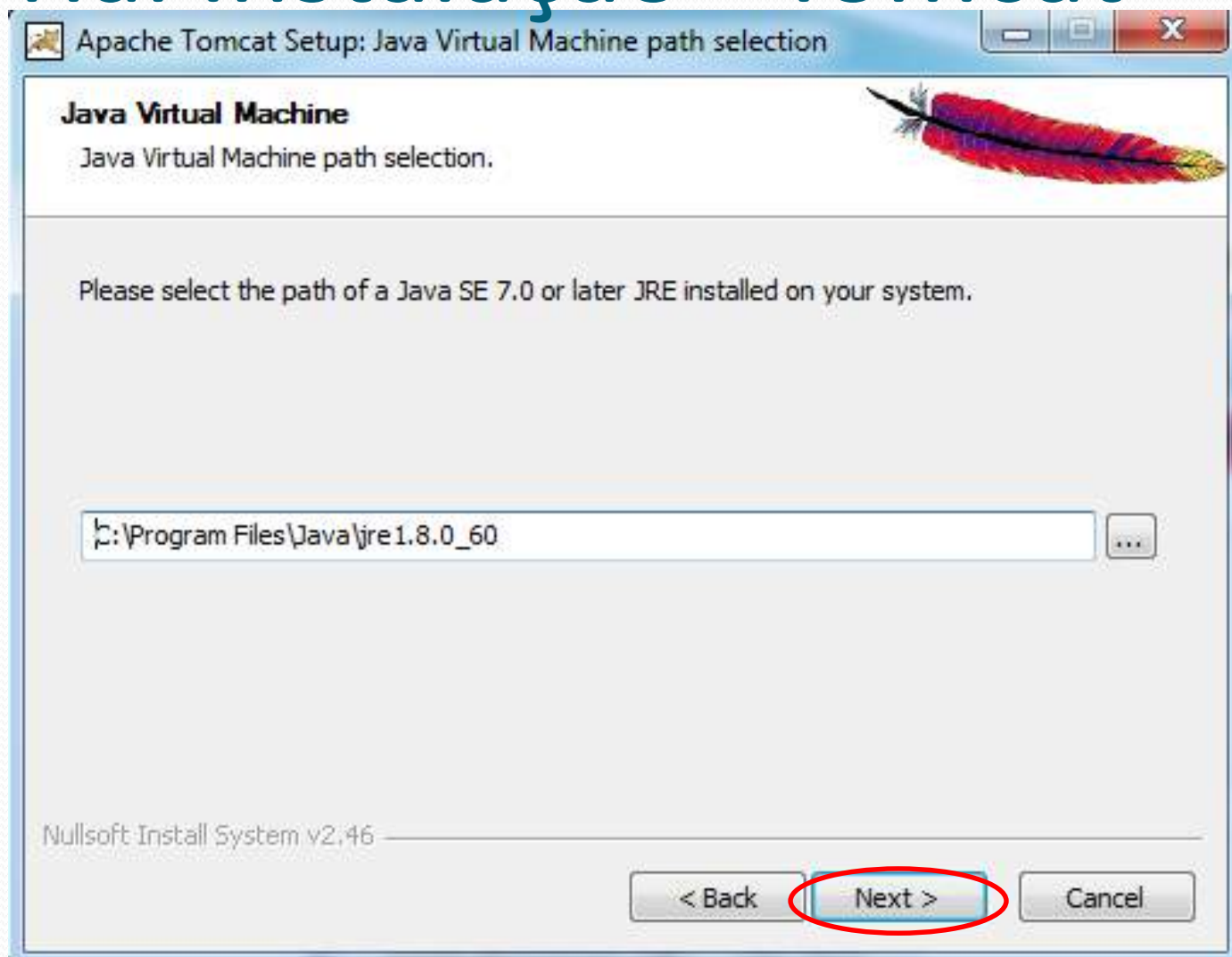
Roles: admin-gui,manager-gui

Nullsoft Install System v2.46

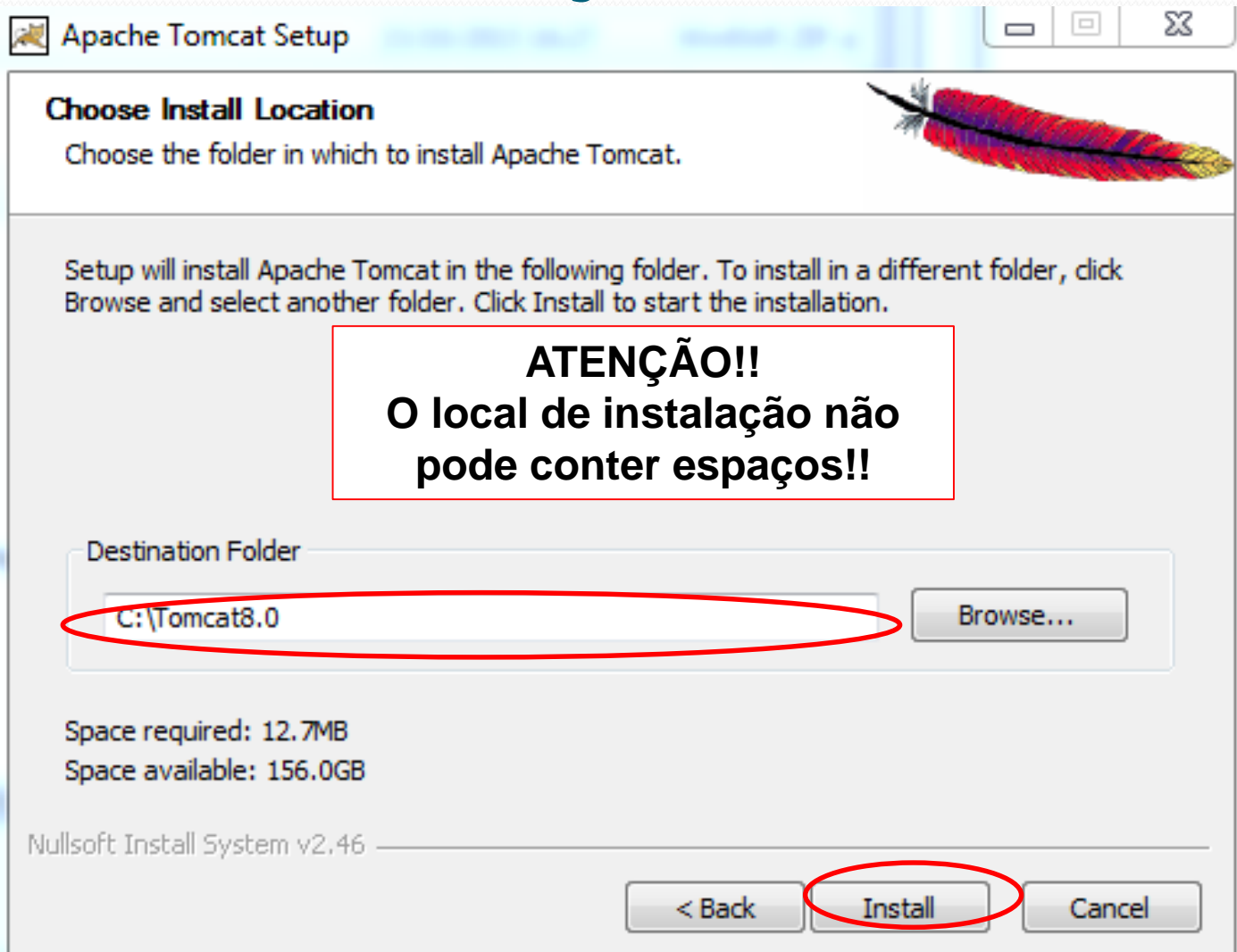
< Back Next > Cancel

**ATENÇÃO!!**  
A porta do HTTP deve ser 8081 para evitar conflitos com o Oracle

# Tutorial Instalação - Tomcat

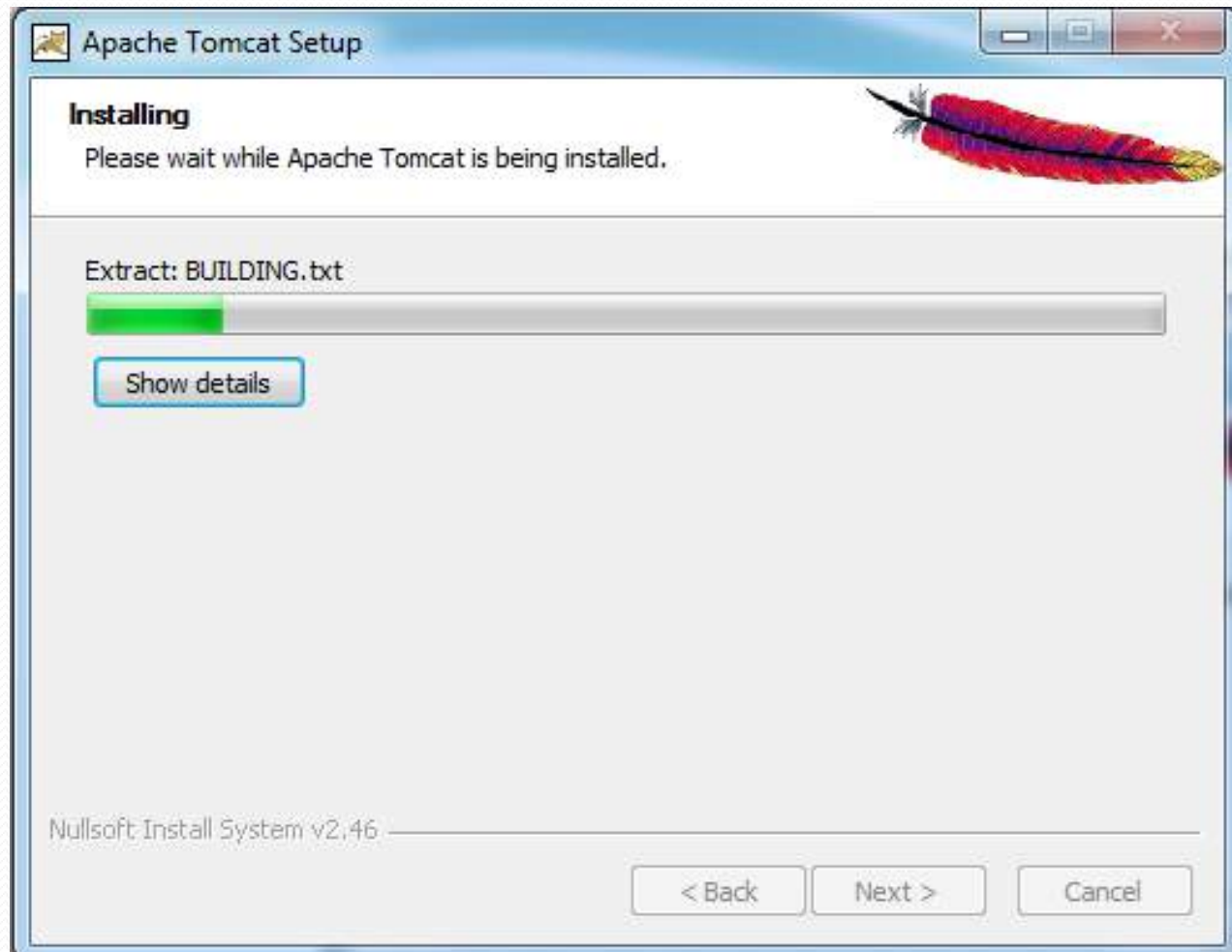


# Tutorial Instalação - Tomcat

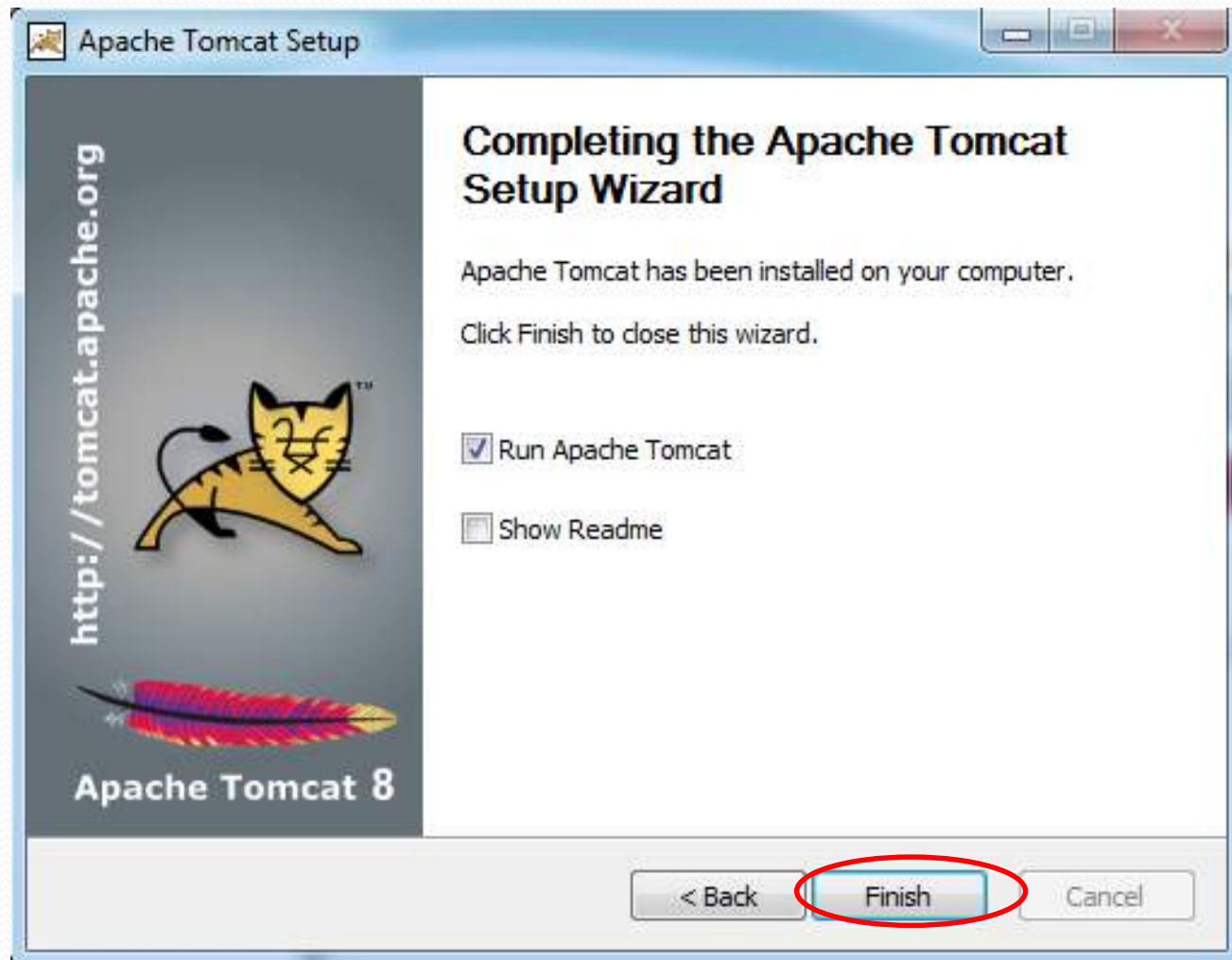




# Tutorial Instalação - Tomcat

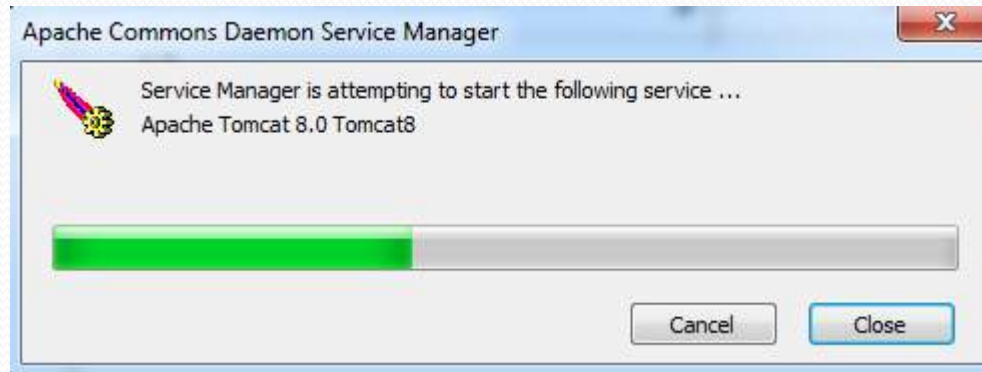


# Tutorial Instalação - Tomcat



# Tutorial Instalação - Tomcat

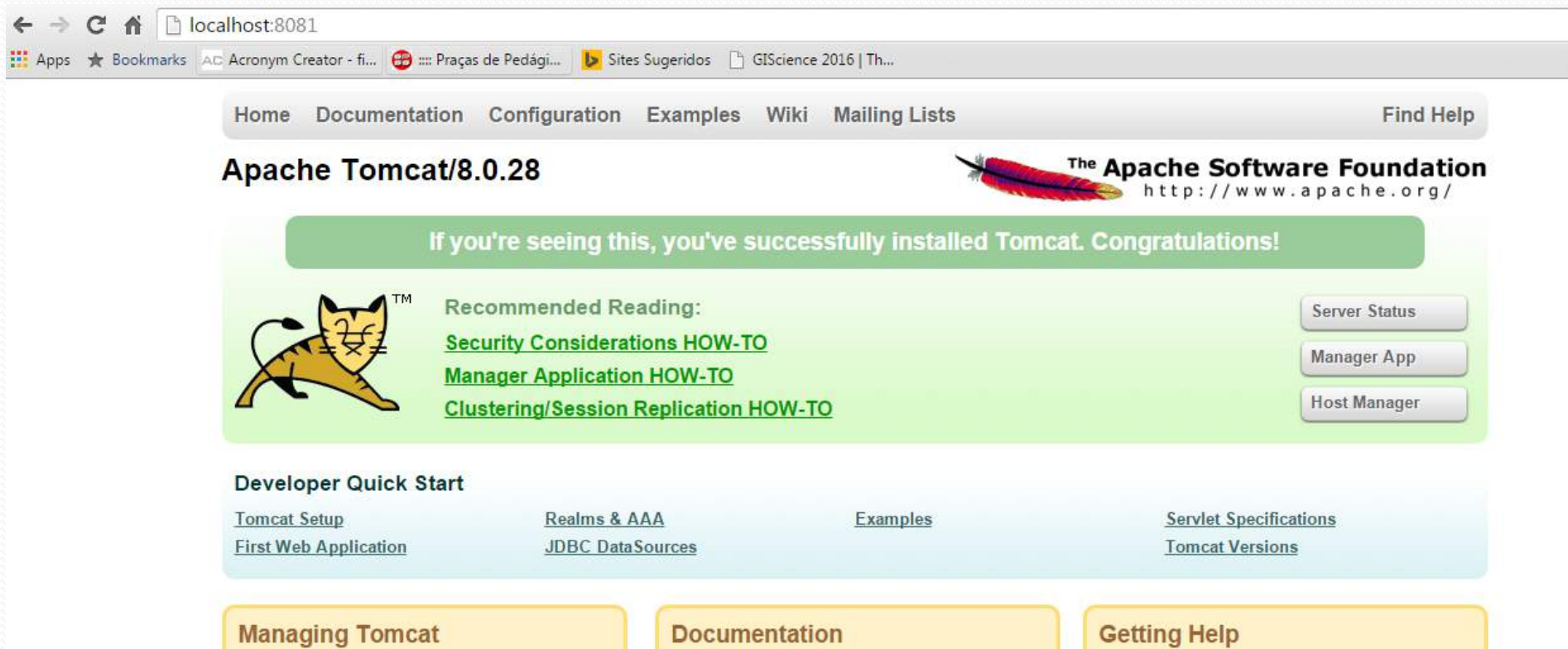
- O serviço do Tomcat iniciará



- Para ver o processo (pausar e iniciar) do omcat, basta abrir o **Monitor Tomcat**

# Tutorial Instalação - Tomcat

- Após o serviço do Tomcat ser iniciado, abra um navegador e digite o endereço: <http://localhost:8081/>



The screenshot shows a web browser window with the address bar set to `localhost:8081`. The browser's address bar and tabs are visible at the top. The main content area displays the Apache Tomcat 8.0.28 homepage. At the top, there is a navigation bar with links: Home, Documentation, Configuration, Examples, Wiki, Mailing Lists, and a Find Help button. Below this, the text "Apache Tomcat/8.0.28" is displayed on the left, and the Apache Software Foundation logo and URL (<http://www.apache.org/>) are on the right. A large green banner in the center reads: "If you're seeing this, you've successfully installed Tomcat. Congratulations!". Below the banner, on the left, is the Tomcat logo (a stylized orange cat). To the right of the logo, under the heading "Recommended Reading:", are three links: [Security Considerations HOW-TO](#), [Manager Application HOW-TO](#), and [Clustering/Session Replication HOW-TO](#). On the far right of this section are three buttons: "Server Status", "Manager App", and "Host Manager". Below the recommended reading section is a "Developer Quick Start" section with four links: [Tomcat Setup](#), [Realms & AAA](#), [Examples](#), and [Servlet Specifications](#). At the bottom of the page, there are three yellow buttons: "Managing Tomcat", "Documentation", and "Getting Help".

← → ↻ 🏠 `localhost:8081`


Apps ★ Bookmarks Acronym Creator - fi... Praças de Pedági... Sites Sugeridos GIScience 2016 | Th...

Home Documentation Configuration Examples Wiki Mailing Lists Find Help

Apache Tomcat/8.0.28

The Apache Software Foundation  
<http://www.apache.org/>

If you're seeing this, you've successfully installed Tomcat. Congratulations!

 Recommended Reading:

- [Security Considerations HOW-TO](#)
- [Manager Application HOW-TO](#)
- [Clustering/Session Replication HOW-TO](#)

Server Status  
Manager App  
Host Manager

Developer Quick Start

- [Tomcat Setup](#)
- [Realms & AAA](#)
- [Examples](#)
- [Servlet Specifications](#)

[First Web Application](#) [JDBC DataSources](#) [Tomcat Versions](#)

Managing Tomcat Documentation Getting Help

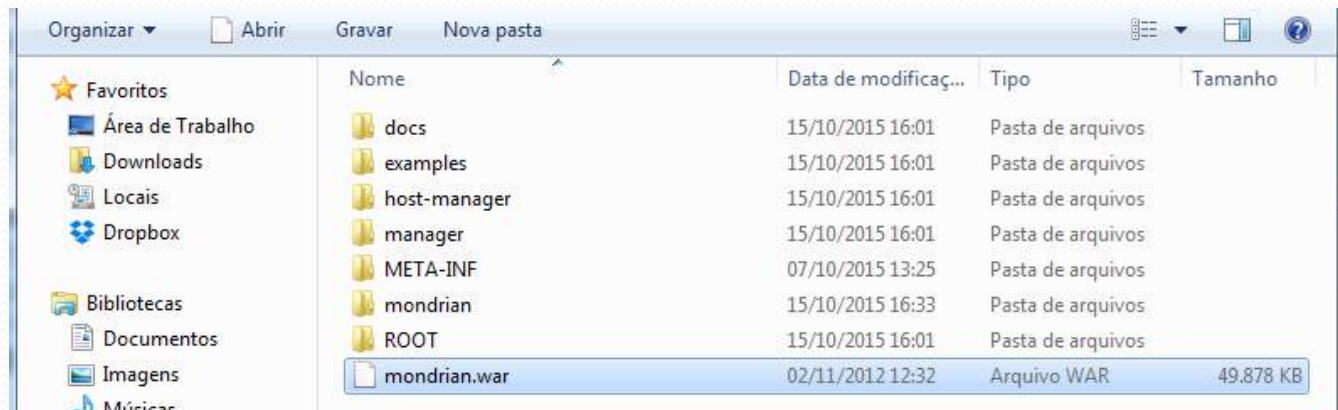
# Tutorial Instalação – Mondrian

- A partir da versão 3.5 do Mondrian, foi retirado a ferramenta de visualização JPivot, e por isso, os desenvolvedores somente disponibilizaram o Mondrian como uma biblioteca
- Devido a isso, efetue o download da versão 3.5.0 do Mondrian
  - <http://sourceforge.net/projects/mondrian/files/mondrian/mondrian-3.5.0/mondrian-3.5.0.zip/download>



# Tutorial Instalação – Mondrian

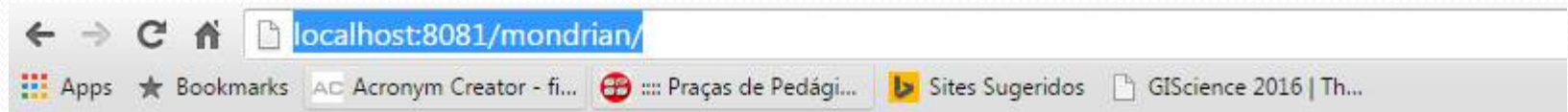
- Descompacte o arquivo *mondrian-3.5.0.zip*
- Acesse a pasta *mondrian-3.5.0/lib* e copie o arquivo *mondrian.war* para a pasta *webapps* do Tomcat (C:\Tomcat8.0\webapps)
- Como resultado, o servidor Tomcat irá automaticamente criar uma pasta chamada *mondrian*



# Tutorial Instalação – Mondrian

- Para verificar se o mondrian foi corretamente instalado, acesse no navegador:

<http://localhost:8081/mondrian/>



Mondrian examples:

- [JPivot pivot table](#)
- [JPivot pivot table by XMLA](#)
- [JPivot with 4 hierarchies](#)
- [JPivot with role 'California Manager' set](#)
- [JPivot with arrows](#)
- [JPivot with colors](#)
- [Various queries formatted using the Mondrian tag-library](#)
- [Basic interface for ad hoc queries](#)
- [XML for Analysis tester](#)

Other links:

- [Mondrian home page](#)
- [Mondrian project page](#)
- [JPivot home page](#)
- [JPivot project page](#)

# Configuração do Mondrian

- Efetue o download do Oracle JDBC (ojdbc6.jar)
  - <http://www.oracle.com/technetwork/apps-tech/jdbc-112010-090769.html>

www.oracle.com/technetwork/apps-tech/jdbc-112010-090769.html

marks AC Acronym Creator - fi... Praças de Pedági... Sites Sugeridos GIScience 2016 | Th...

Oracle Commerce  
Utilities  
Communications

### Oracle Database 11g Release 2 (11.2.0.4) JDBC Drivers

**SimpleFAN**  
simplefan.jar (20,365 bytes) - (SHA1 Checksum: 307a7e203d7e141964158d181ca849d512d7e710)  
Classes for subscribing to RAC events via ONS; simplefan policy and javadoc

**JDBC Thin for All Platforms**  
JavaDoc (6,415,512 bytes)  
README

**ojdbc6.jar** (2,739,670 bytes) - (SHA1 Checksum: a483a0463ee2f404d864a6ff5b09dc0e1be3fe6c)  
Certified with JDK 8, JDK 7 and JDK 6: It contains the JDBC driver classes except classes for NLS support in Oracle Object and Collection types.

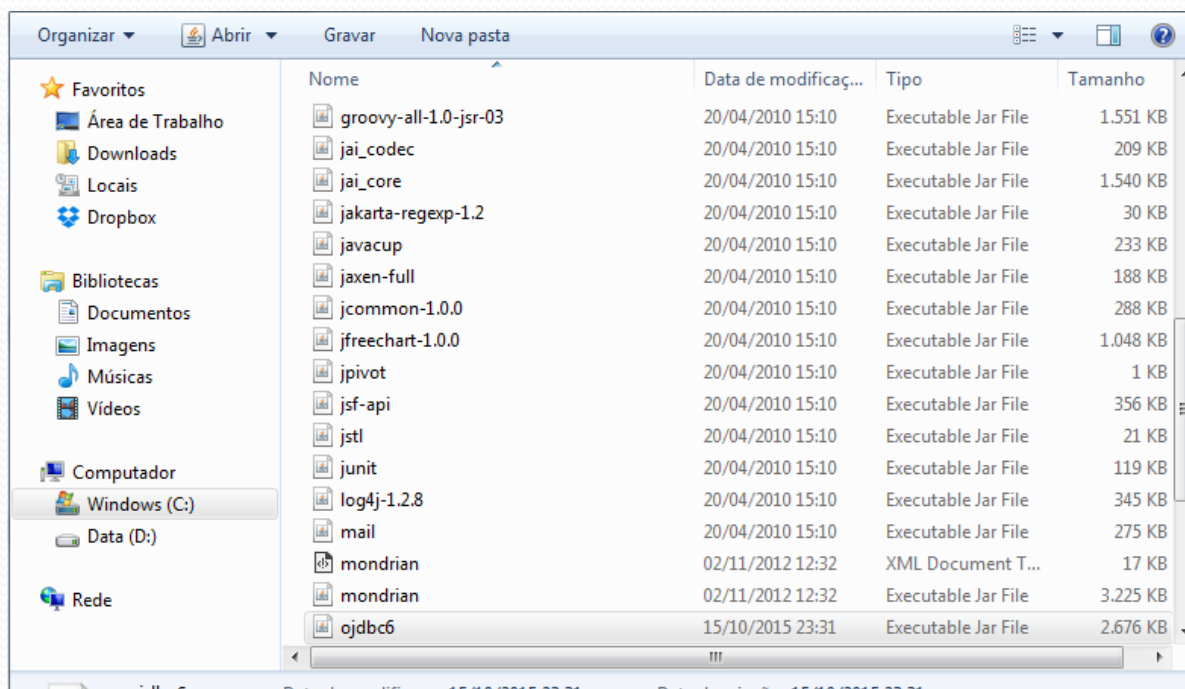
ojdbc6\_g.jar (4,494,956 bytes) - (SHA1 Checksum: bf50af31967911af63058a6e1e5249c2dae34823)  
Same as ojdbc6.jar except compiled with "javac -g" and contains tracing code.

ojdbc6dms.jar (3,350,769 bytes) - (SHA1 Checksum: d268a890a9a681cf498a9fe9c47e92ca06ac26f0)

Enterprise Pac  
Java  
JDeveloper an  
Oracle Linux a  
MySQL  
NetBeans IDE  
NoSQL Datab  
Solaris  
SQL Develop  
VirtualBox  
WebLogic Ser

# Configuração do Mondrian

- Copie o arquivo ojdbc6.jar na pasta  
C:\Tomcat8.0\webapps\mondrian\WEB-INF\lib



# Configuração do Mondrian

- O *data warehouse* que será usado em aula já está carregado para cada aluno da disciplina de OLAP
- Para maiores informações, acesse seu usuário e senha do Servidor Oracle Cloud ICMC
  - Para isso baixem e instalem o SQL Developer
    - <http://www.oracle.com/technetwork/developer-tools/sql-developer/downloads/index.html>
  - Maiores informações de acesso
    - [http://www.icmc.usp.br/CMS/Arquivos/arquivos\\_enviados/STI\\_23\\_ACESSO%20AO%20SERVIDOR%20ORACLE.pdf](http://www.icmc.usp.br/CMS/Arquivos/arquivos_enviados/STI_23_ACESSO%20AO%20SERVIDOR%20ORACLE.pdf)
- Informações importantes:
  - Seu Usuário é: a letra o seguido pelo número USP
  - Sua Senha é: a letra o seguido pelo número USP
  - Exemplo: se meu número USP é 123, meu usuário e senha são: o123



# Configuração do Mondrian

- Abra com um editor de texto (por exemplo, o NotePad++) o arquivo C:\Tomcat8.0\webapps\mondrian\WEB-INF\queries\mondrian.jsp
- Altere seu conteúdo para

```
<%@ page session="true" contentType="text/html; charset=ISO-8859-1" %>
<%@ taglib uri="http://www.tonbeller.com/jpivot" prefix="jp" %>
<%@ taglib prefix="c" uri="http://java.sun.com/jstl/core" %>
```

```
<jp:mondrianQuery id="query01" jdbcDriver="oracle.jdbc.OracleDriver"
jdbcUrl="jdbc:oracle:thin:@grad.icmc.usp.br:15215:orcl"
catalogUri="/WEB-INF/queries/cubessb.xml"
jdbcUser="SEU_USUARIO_ORACLE" jdbcPassword="SUA_SENHA"
connectionPooling="false">
```

```
select {[Measures].[Revenue]} on columns, {[Supplier].Children} on
rowsfrom CubeSSB
```

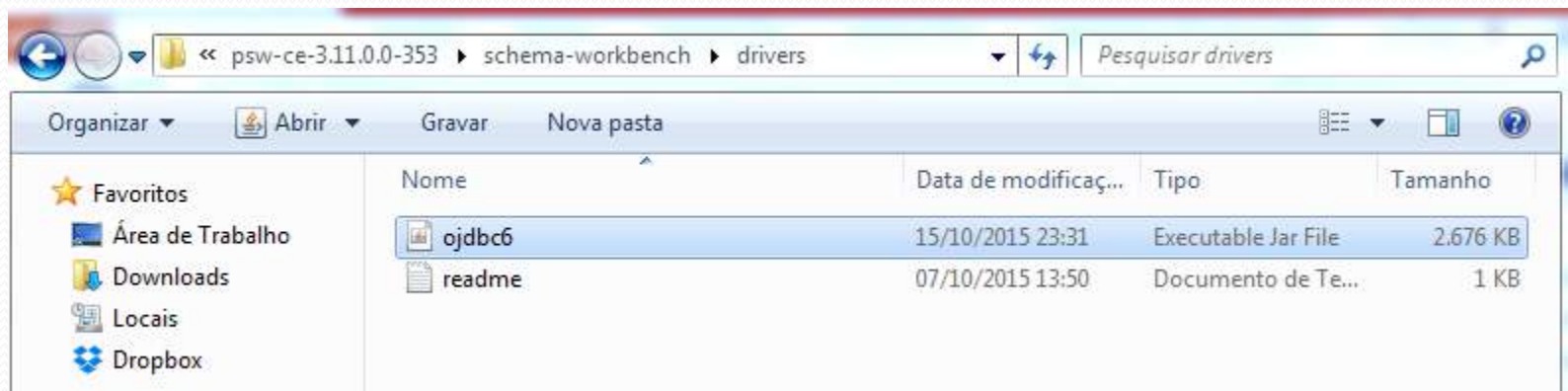
```
</jp:mondrianQuery>
```

```
<c:set var="title01" scope="session">Test Query uses Mondrian
OLAP</c:set>
```

Modifique **SEU\_USUARIO\_ORACLE** e **SUA\_SENHA** para os campos correspondentes

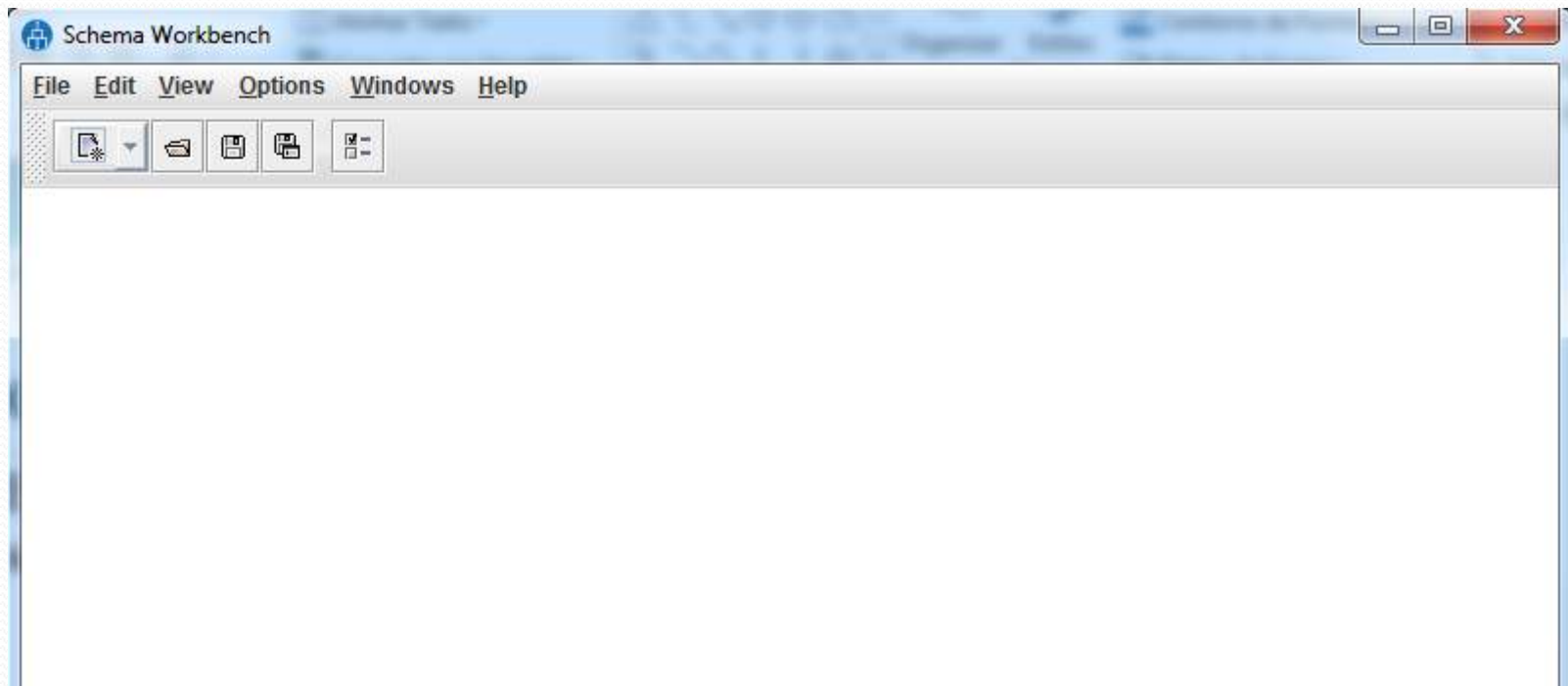
# Download do Schema Workbench

- Efetue o download da versão 3.11.0 do Mondrian Schema Workbench
  - <http://sourceforge.net/projects/mondrian/files/schema%20workbench/3.11.0/psw-ce-3.11.0.0-353.zip/download>
- Descompacte o arquivo psw-ce-3.11.0.0-353.zip
- Copie o arquivo ojdbc6.jar na pasta psw-ce-3.11.0.0-353\schema-workbench\drivers\



# Execução do Schema Workbench

- Execute o arquivo workbench.bat localizado na pasta schema-workbench



# Configuração do Schema Workbench

- Acesse Options->Connection e preencha os campos para a conexão com o banco de dados
- Adapte o campo com **SEU\_USUARIO** de acordo com o seu acesso (slide 18) e informe sua senha no campo Password
- Clique em Test

Database Connection

General  
Advanced  
Options  
Pooling  
Clustering

Connection Name:  
OracleCloudUSP

Connection Type:  
MS SQL Server  
MS SQL Server (Native)  
MaxDB (SAP DB)  
MonetDB  
MySQL  
Native Mondrian  
Neoview  
Netezza  
Oracle  
Oracle RDB  
Pentaho Data Services  
PostgreSQL  
Redshift  
Remedy Action Request System  
SAP ERP System  
SQLite

Access:  
Native (JDBC)  
ODBC  
OCI  
JNDI

Settings

Host Name:  
grad.icmc.usp.br

Database Name:  
orcl

Tablespace for Data  
Tablespace for Indices

Port Number:  
15215

User Name:  
SEU\_USUARIO

Password:  
.....

Test

OK Cancel

Message Box

Connection to database [OracleCloudUSP] is OK.  
Hostname : grad.icmc.usp.br  
Port : 15215  
Database name : orcl

OK

# Configuração do Schema Workbench

- Acesse a aba Options e insira o seguinte parâmetro
- Adapte o campo com **SEU\_USUARIO** de acordo com o seu acesso (slide 18)
- Clique em Test
- Este passo é importantíssimo! Se seu Schema Workbench travar, por favor, reveja este passo

