

Conexão ao servidor Oracle utilizado em sala de aula,
usando um computador fora da rede interna da grad.

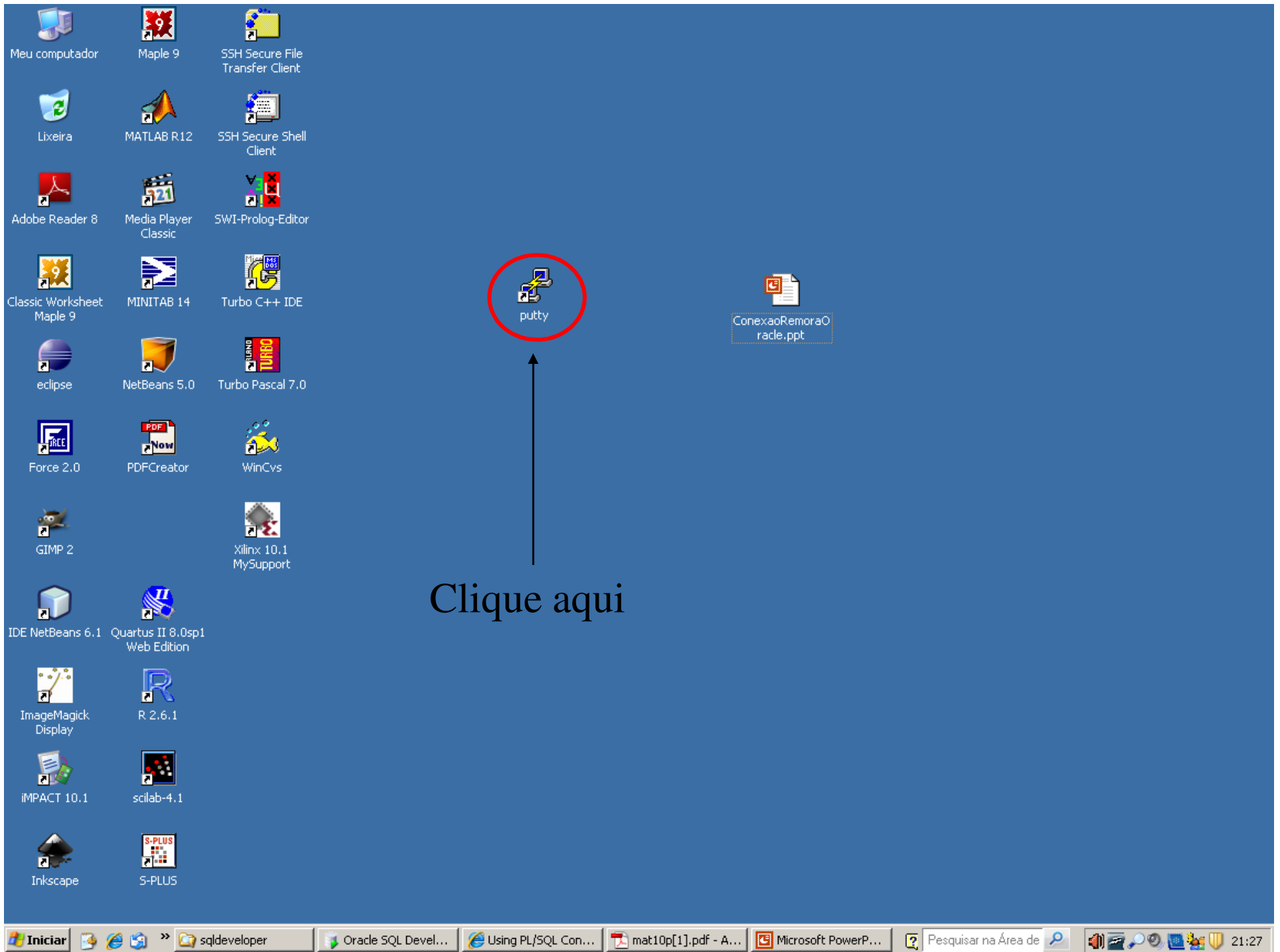
Pré-requisito: instalar o cliente de SSH PuTTY

Link para download do PuTTY:

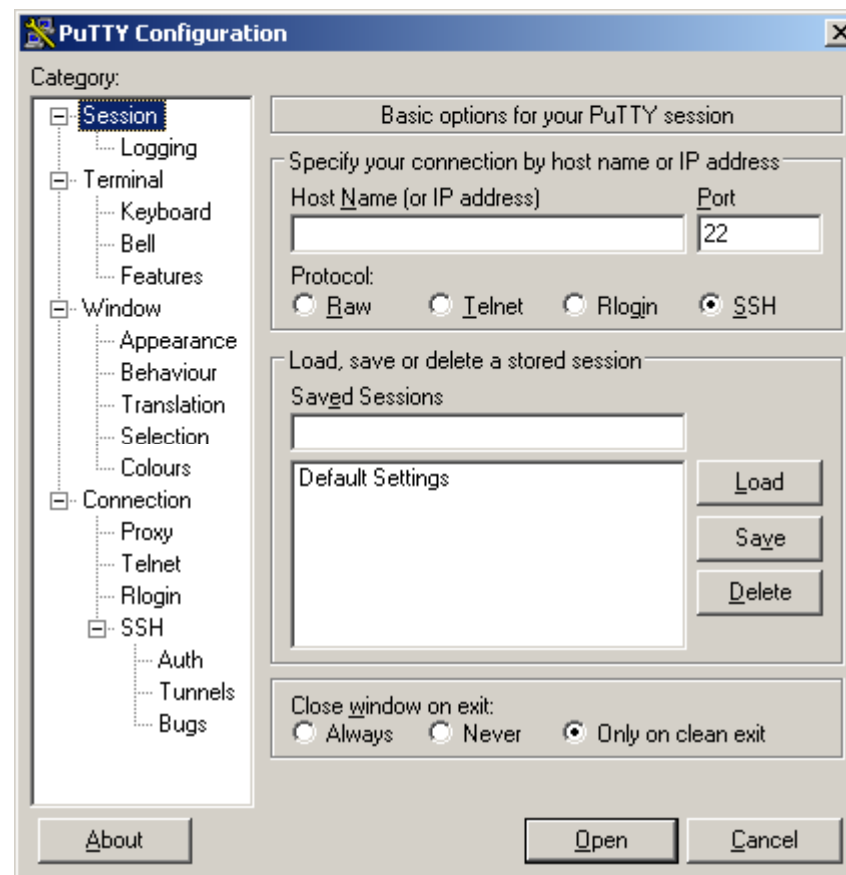
<http://www.chiark.greenend.org.uk/~sgtatham/putty/download.html>

Primeiro Passo

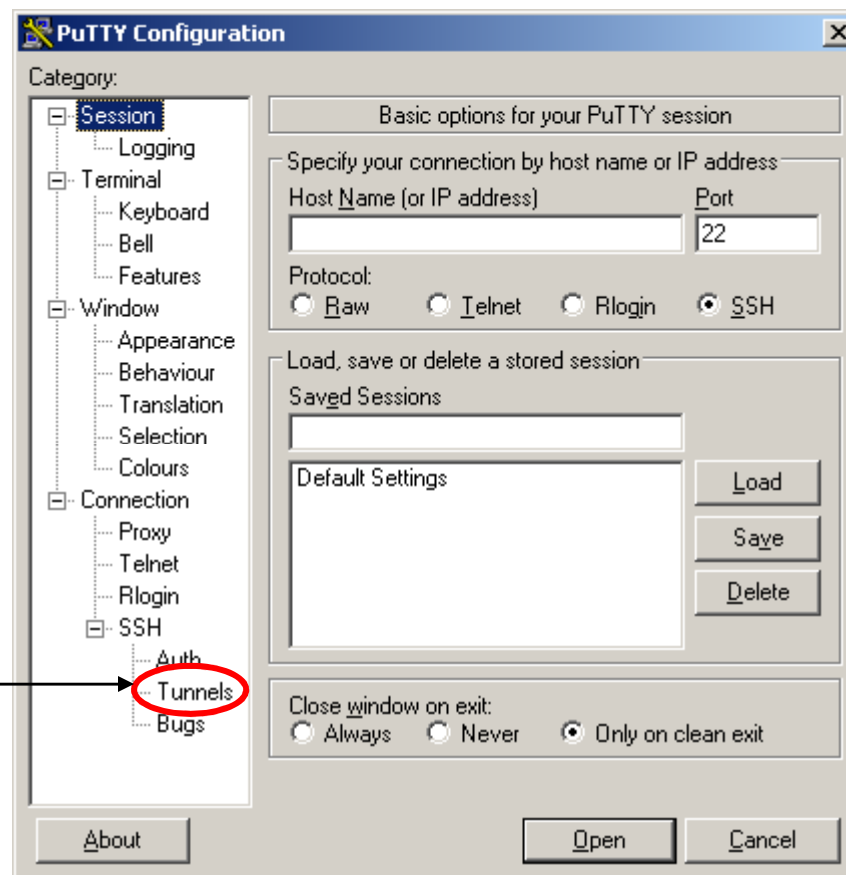
- Conectar no servidor da grad
- Via SSH
- Utilizando o PuTTY

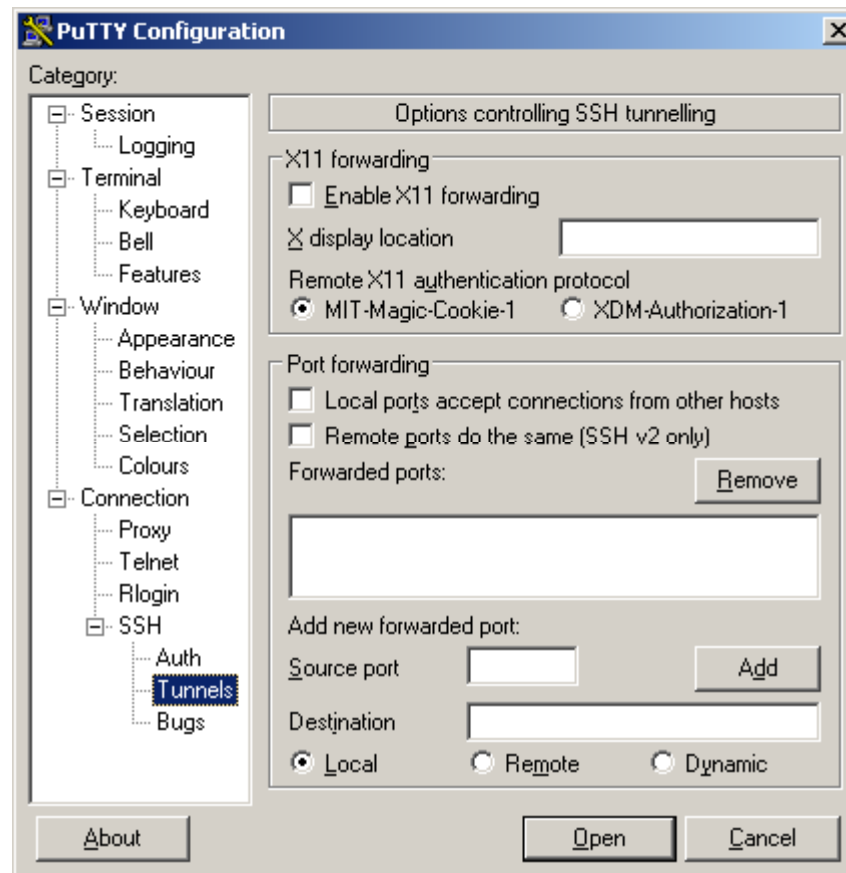


Tela inicial do PuTTY



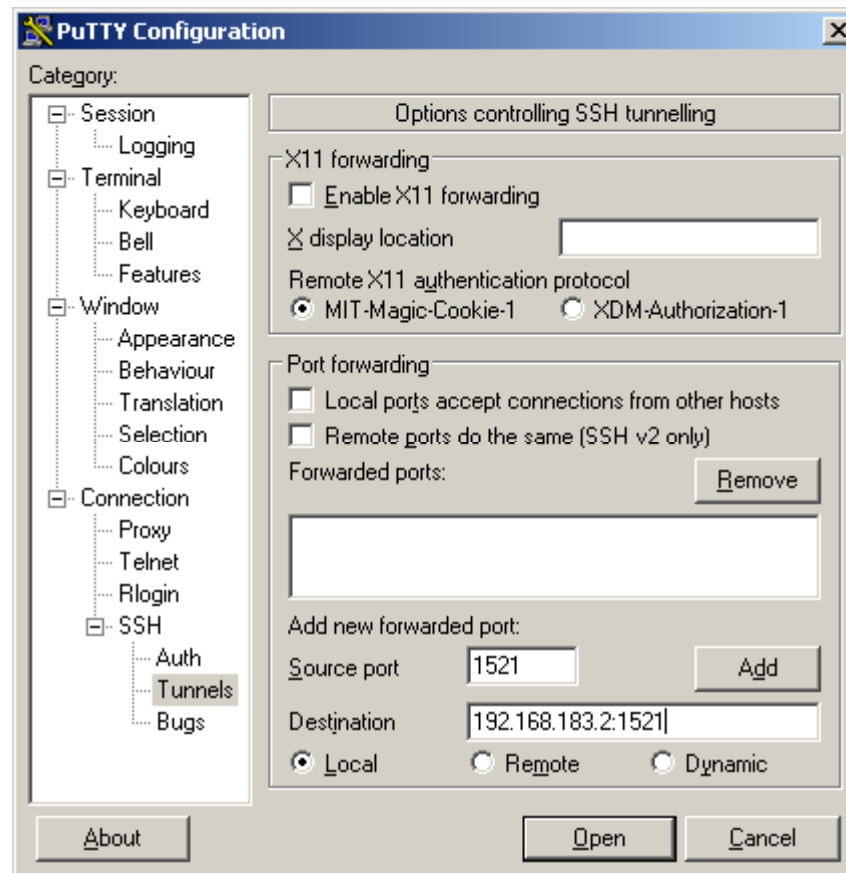
Clique aqui





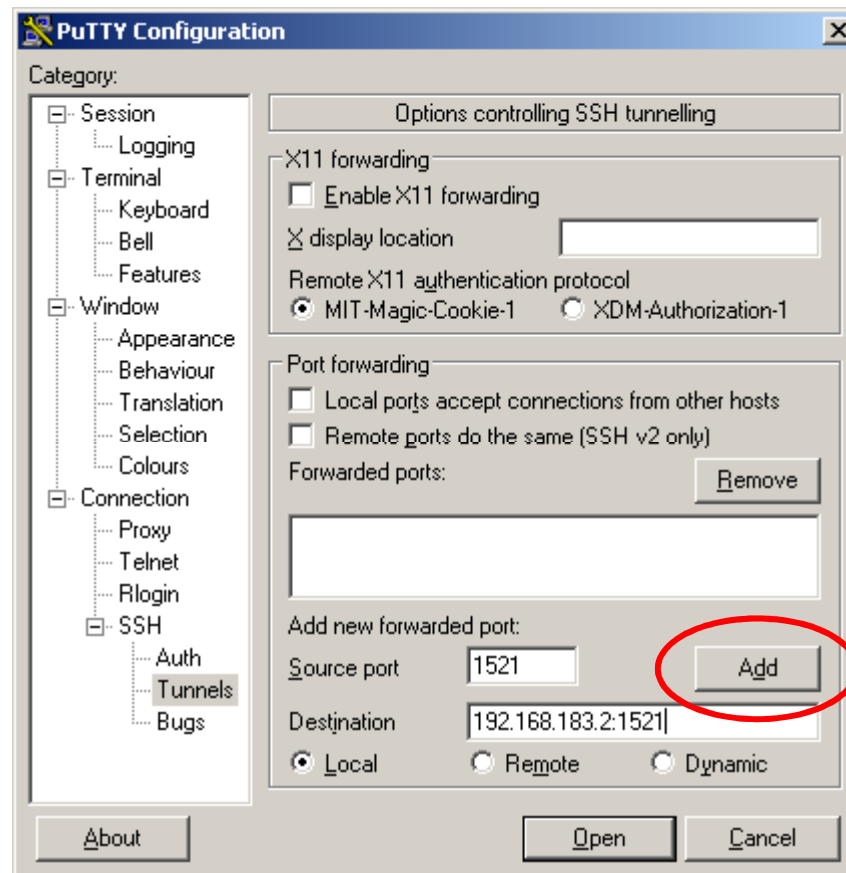
Source Port: 1521

Destination: 192.168.183.2:1521

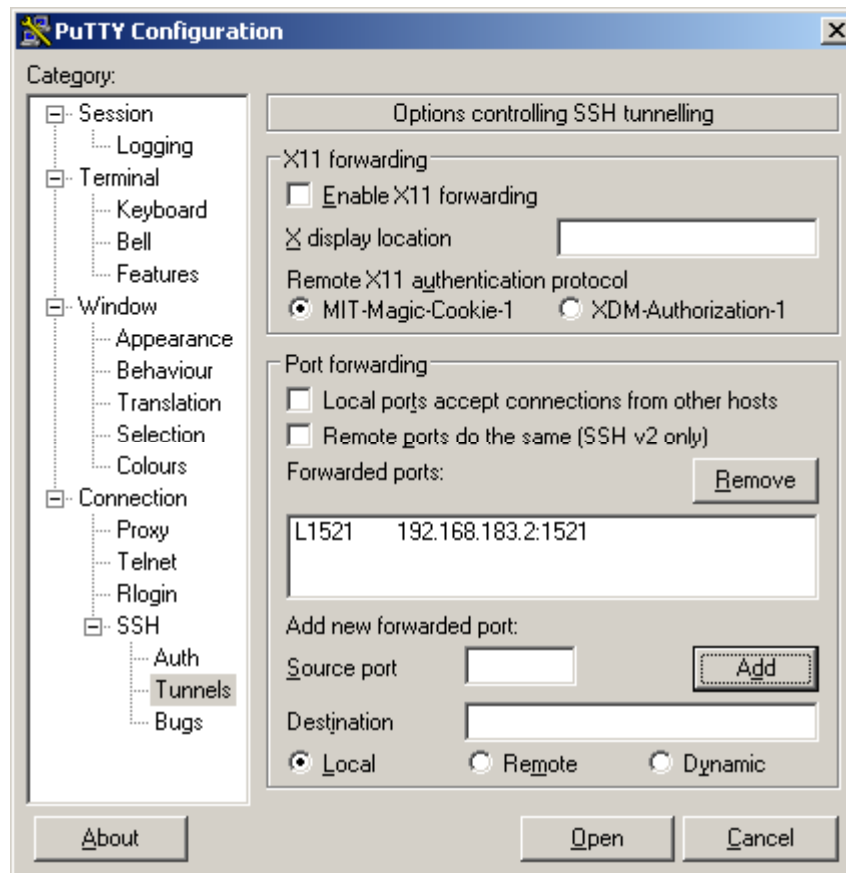


Source Port: 1521

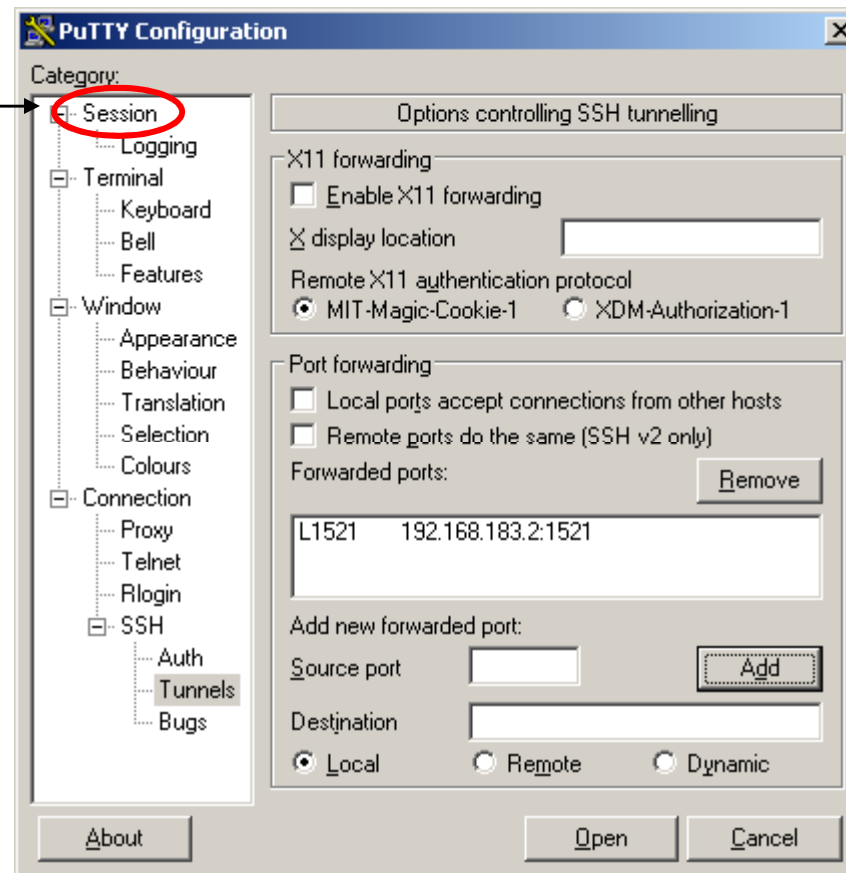
Destination: 192.168.183.2:1521

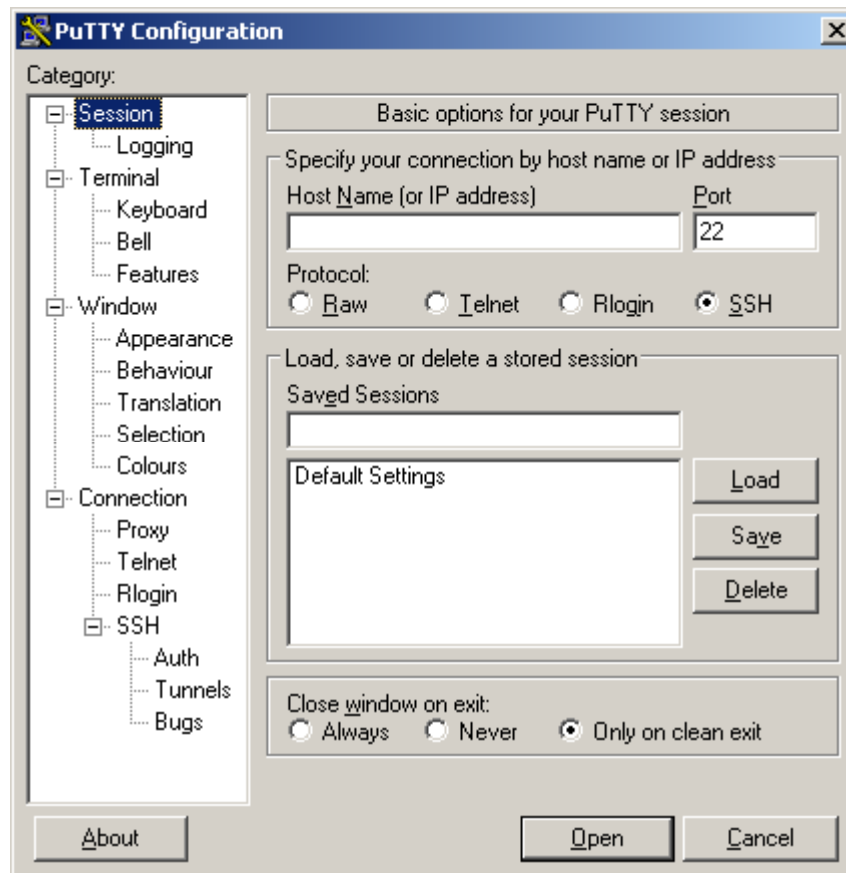


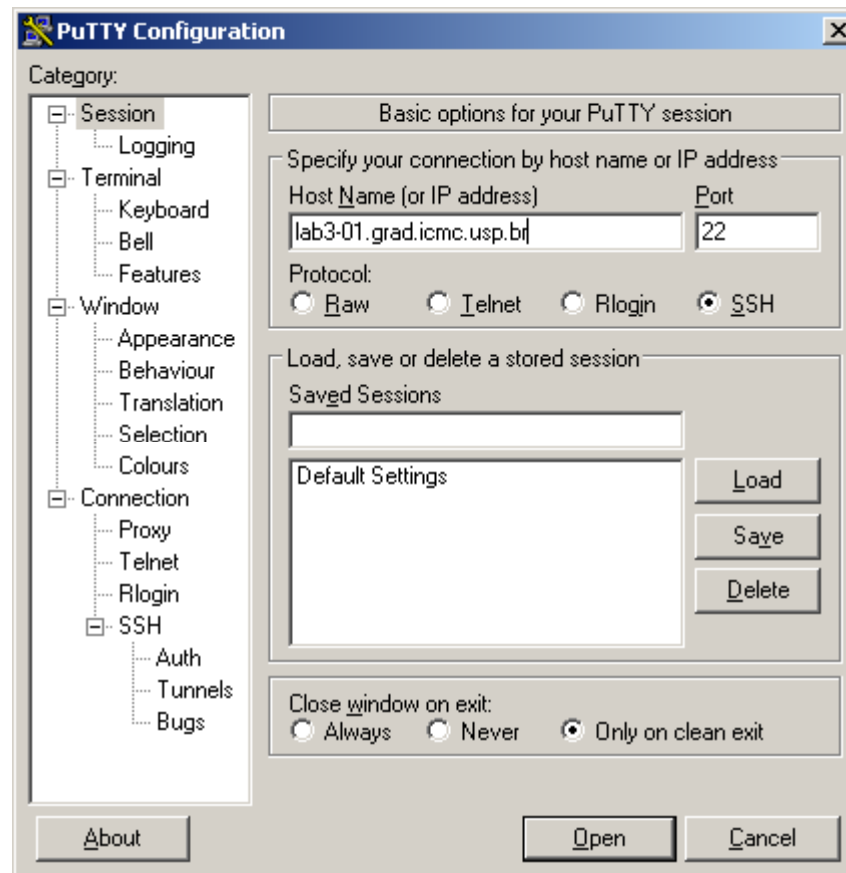
Clique aqui



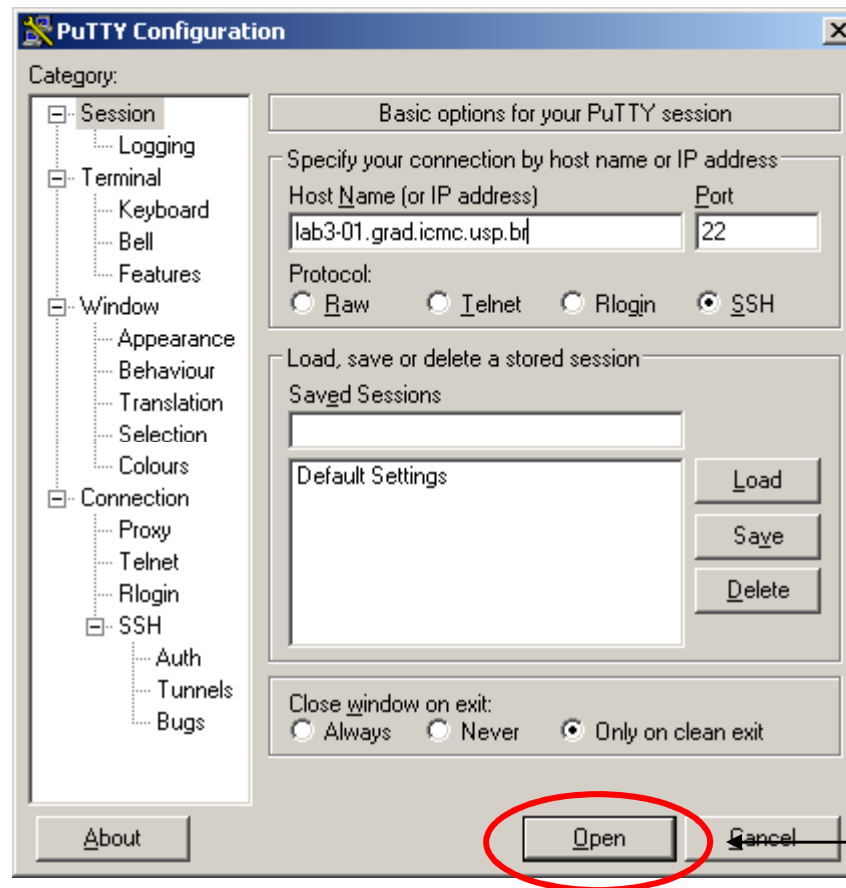
Clique aqui





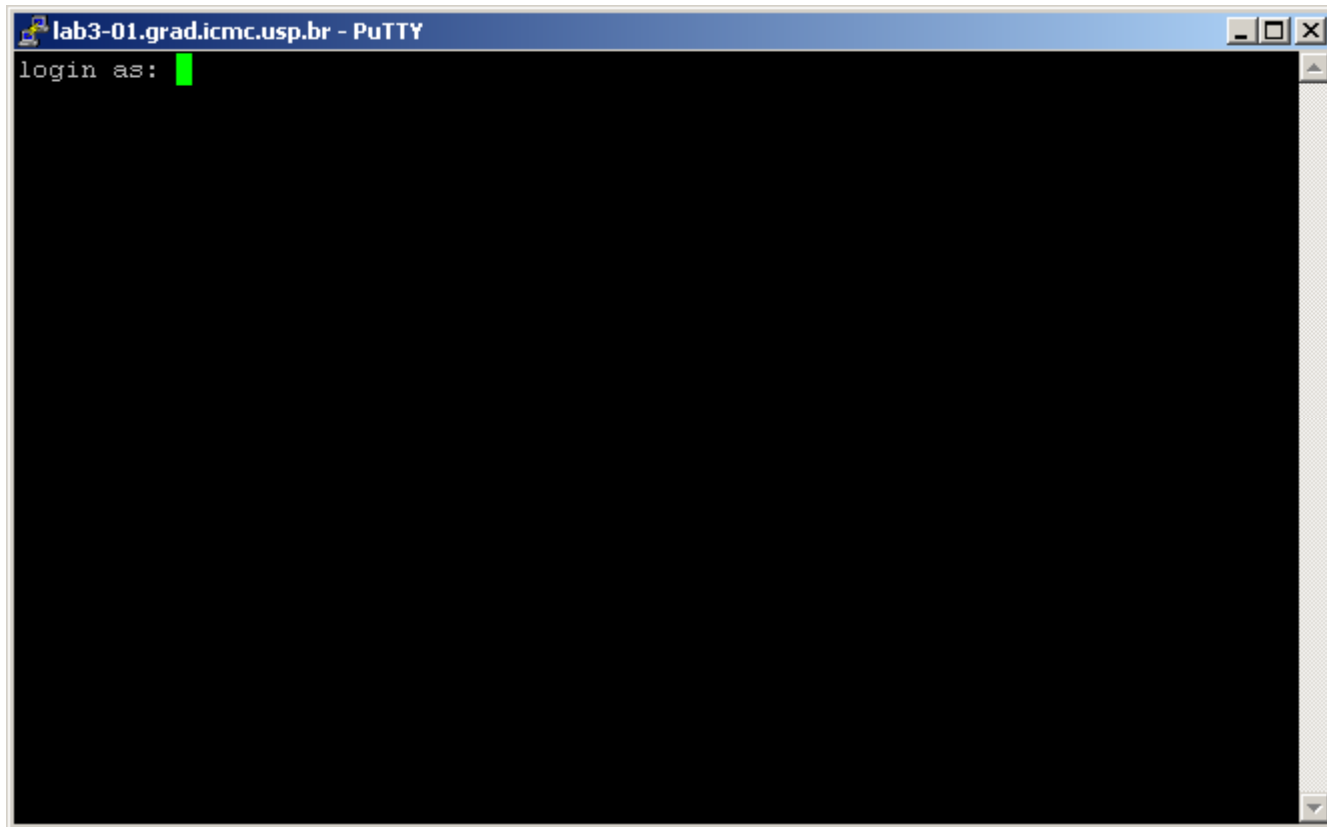


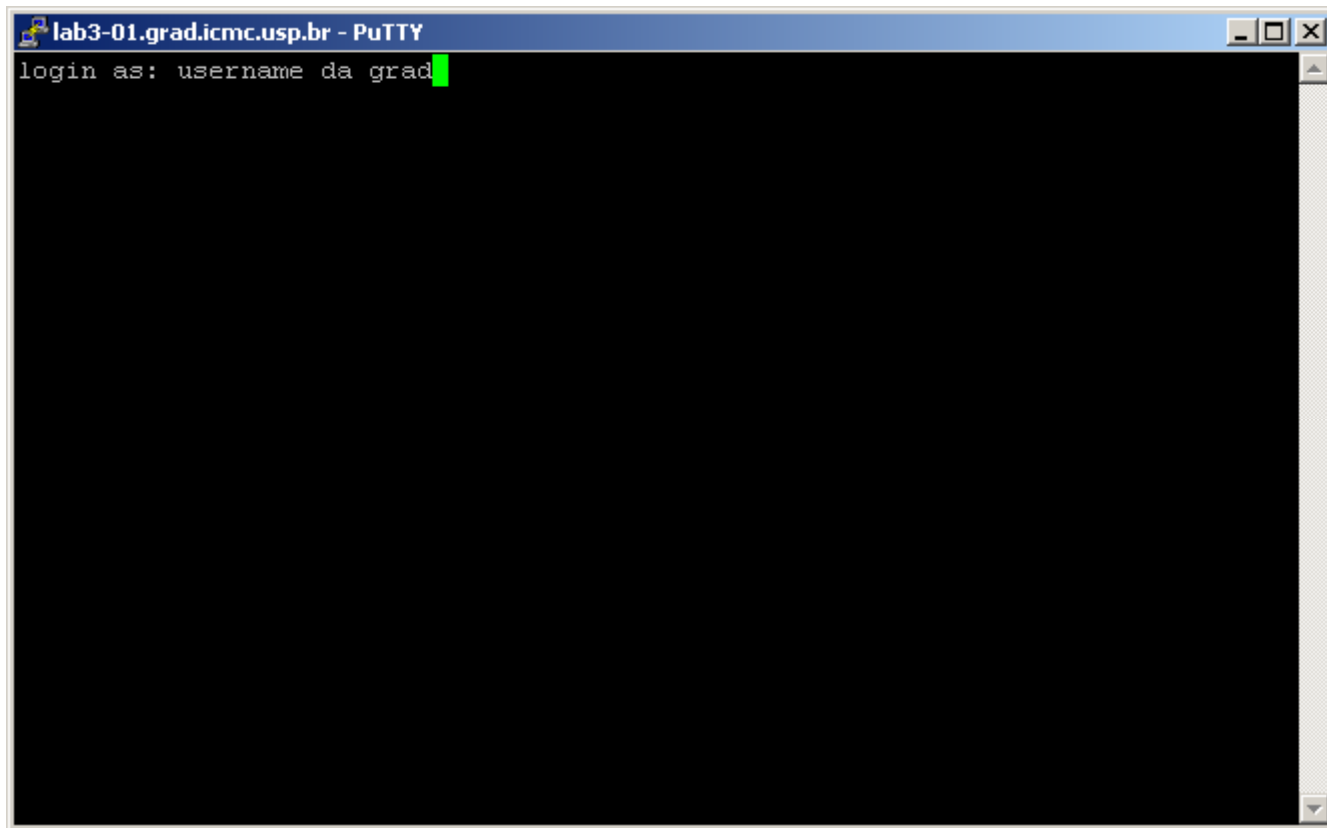
Hostname: lab3-01.grad.icmc.usp.br



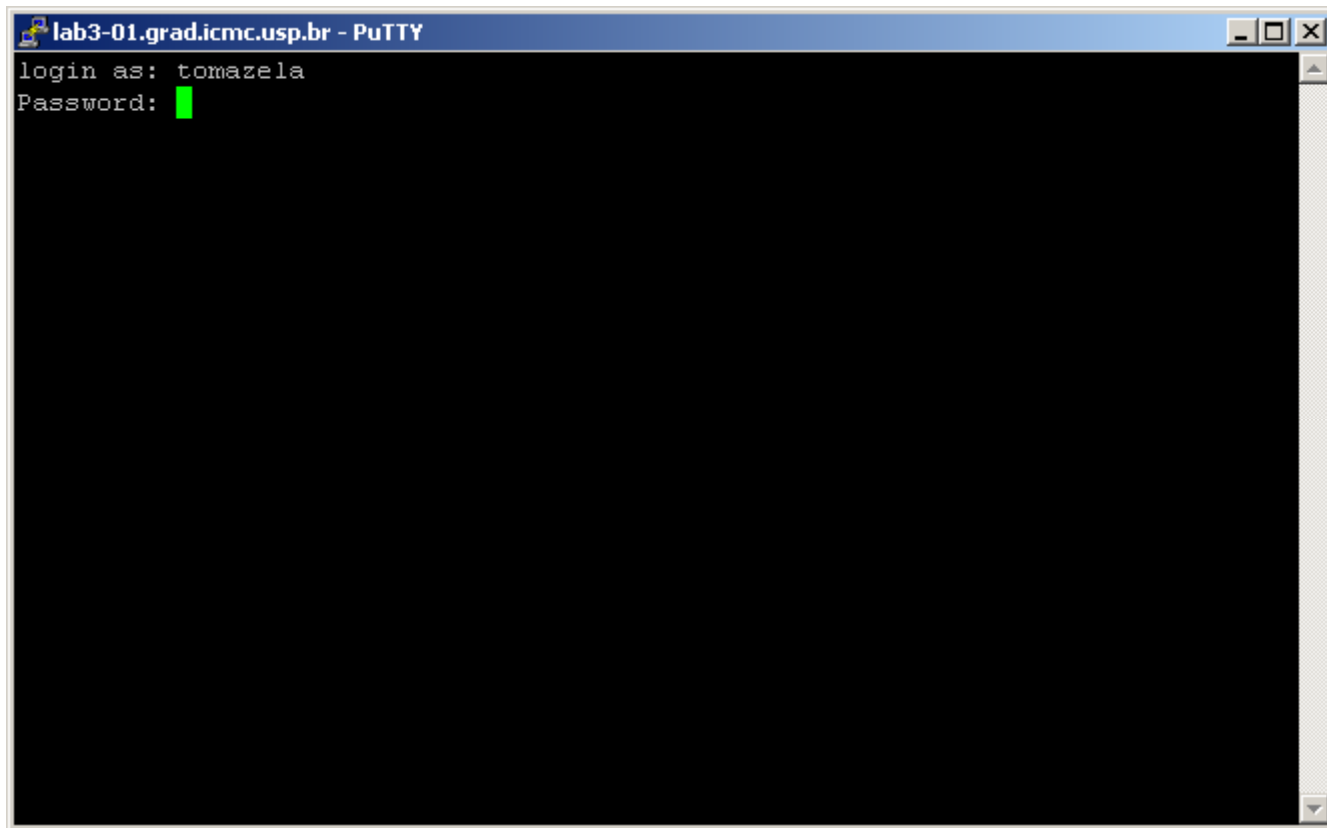
Clique aqui

Hostname: lab3-01.grad.icmc.usp.br

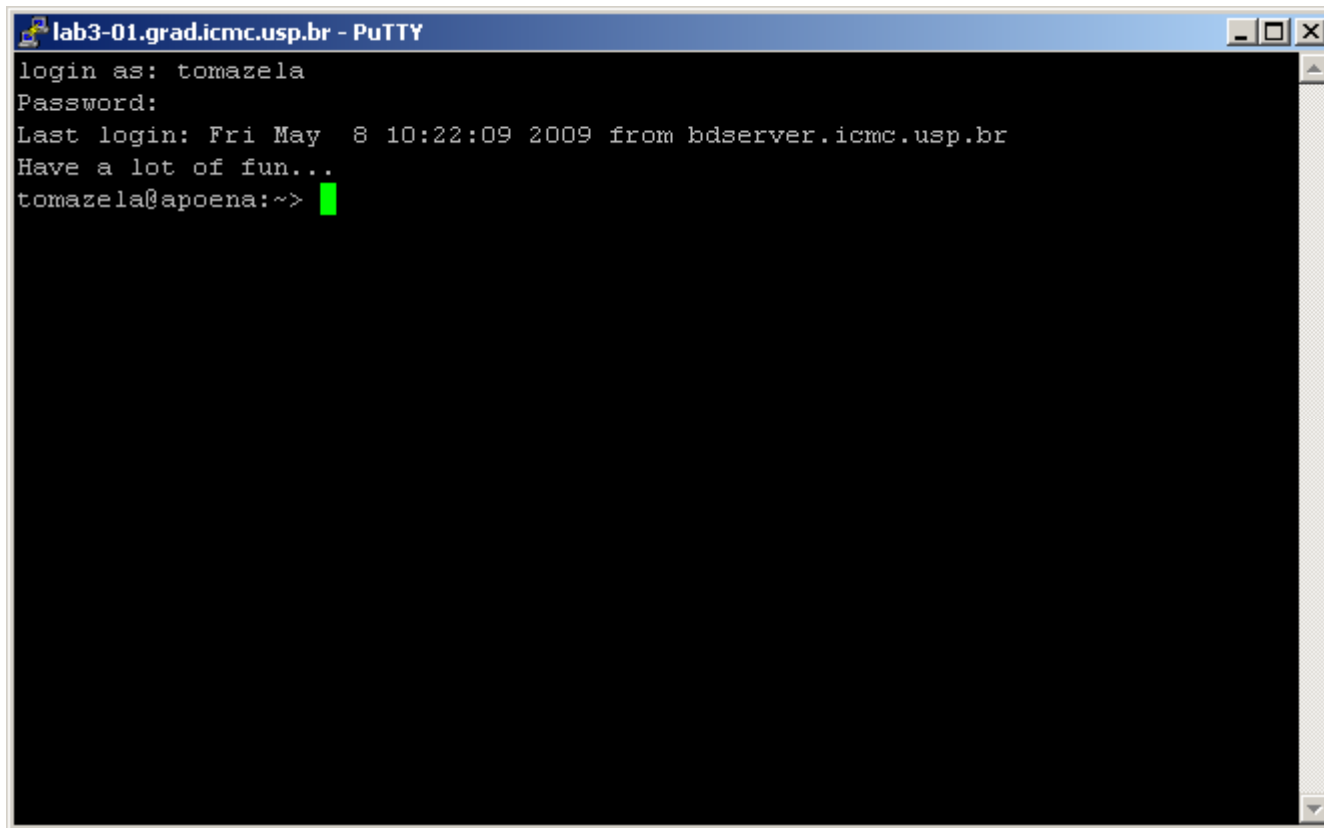




login as: <username da grad>



Password: senha da grad

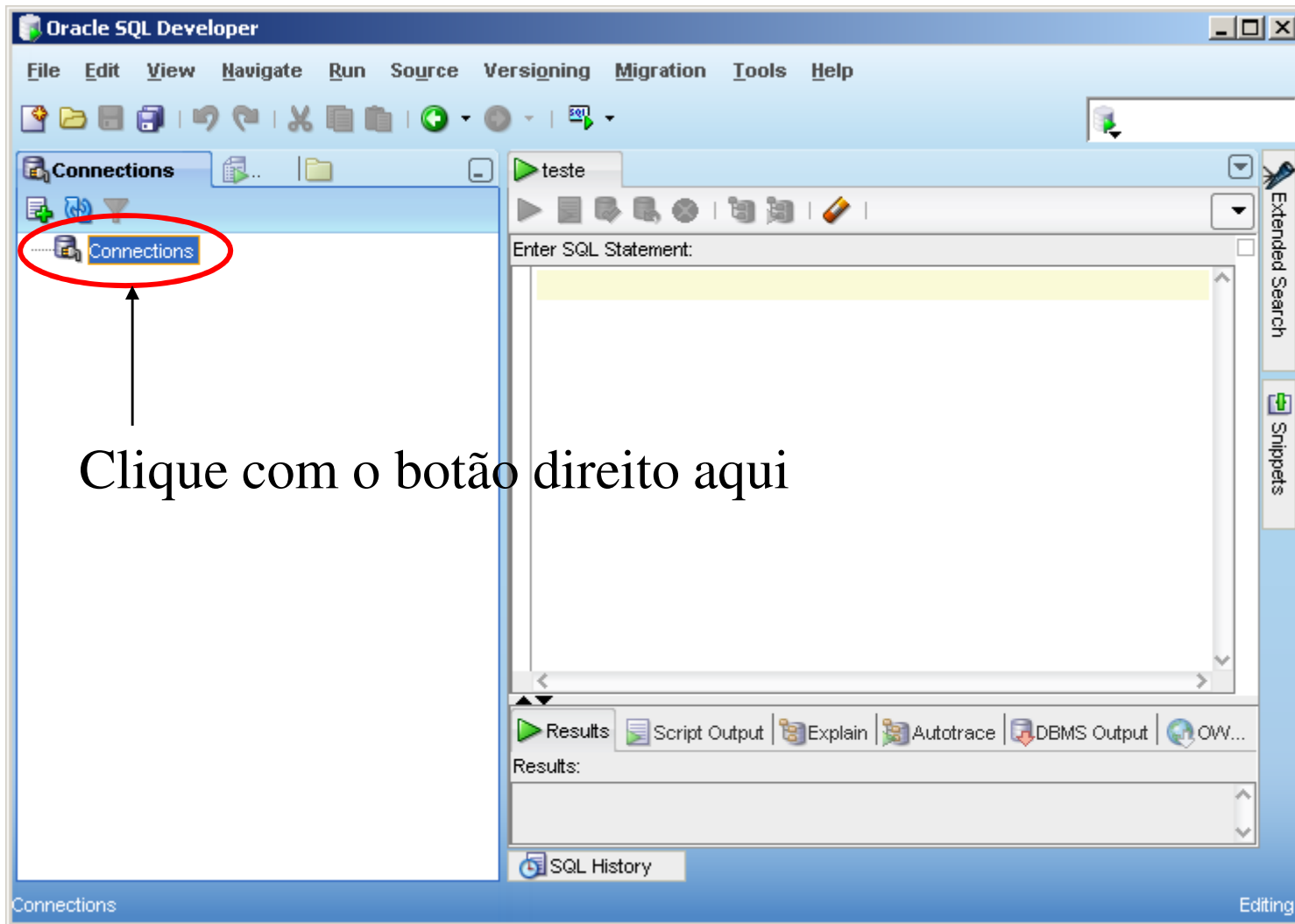


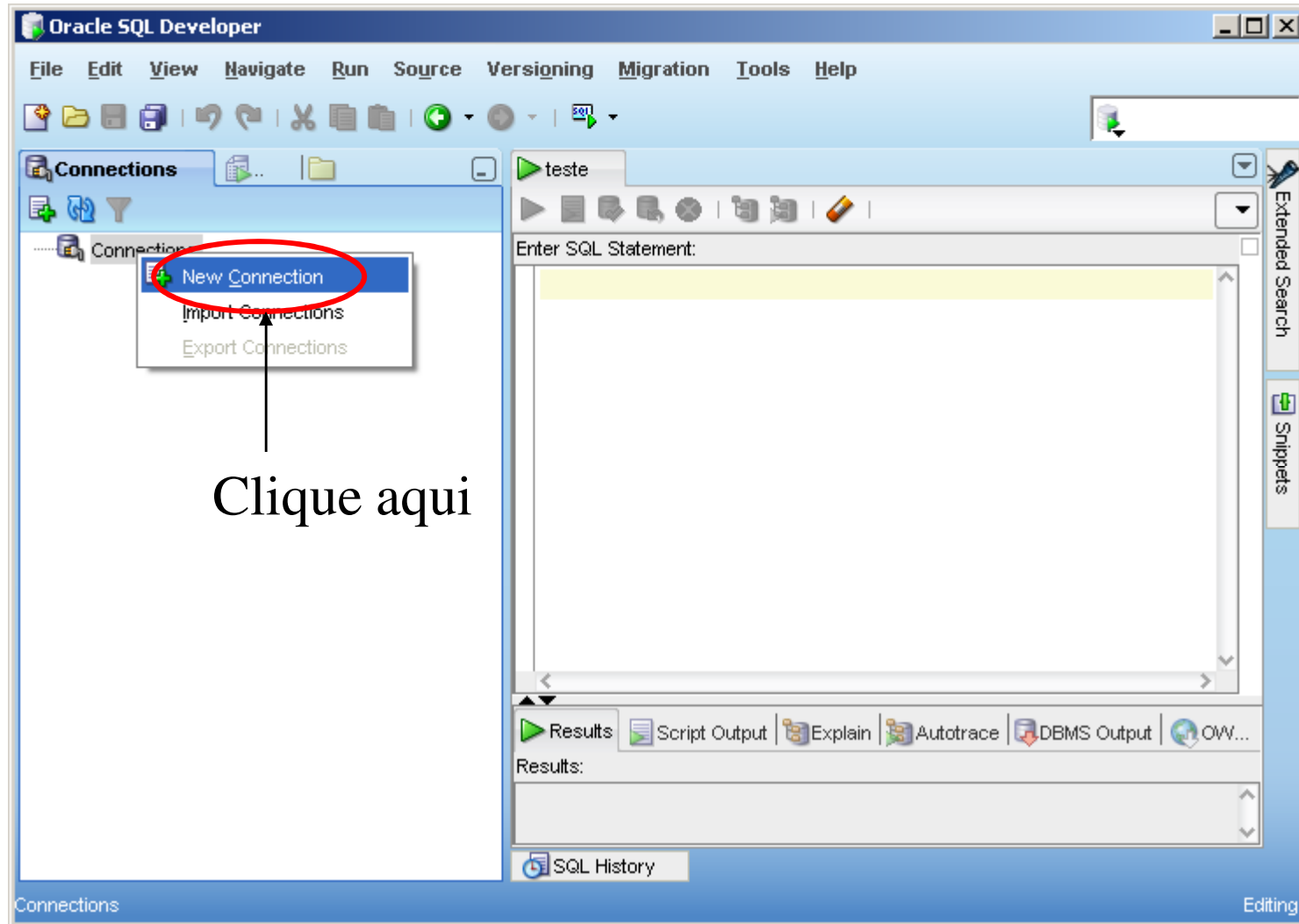
```
lab3-01.grad.icmc.usp.br - PuTTY
login as: tomazela
Password:
Last login: Fri May  8 10:22:09 2009 from bdserver.icmc.usp.br
Have a lot of fun...
tomazela@apoena:~>
```

Conexão estabelecida com a grad!

Próximo passo:

- Abrir o sqldeveloper
- Criar uma conexão para acessar o servidor Oracle





New / Select Database Connection

Connectio... Connectio...

Connection Name

Username

Password

Save Password

Oracle Access

Role default

OS Authentication

Connection Type Basic

Proxy Connection

Hostname localhost

Port 1521

SID

Service name

xe

Status :

Auxílio Save Clear Test Connect Cancelar

Tela para criar a conexão

The screenshot shows the 'New / Select Database Connection' dialog box. The 'Connection Name' field contains 'teste'. The 'Username' field contains 'username' and the 'Password' field contains '*****'. The 'Save Password' checkbox is unchecked. The 'Oracle' tab is selected, and the 'Role' dropdown is set to 'default'. The 'Connection Type' dropdown is set to 'Basic'. The 'OS Authentication' and 'Proxy Connection' checkboxes are unchecked. The 'Hostname' field contains 'localhost', the 'Port' field contains '1521', and the 'SID' radio button is selected with 'orcl' in the adjacent field. The 'Service name' radio button is unselected. The 'Status' is 'Success'. Buttons at the bottom include 'Auxílio', 'Save', 'Clear', 'Test', 'Connect', and 'Cancelar'.

Username: seu username do oracle no servidor

Password: seu password do oracle no servidor

Hostname: localhost

Port: 1521

SID: orcl

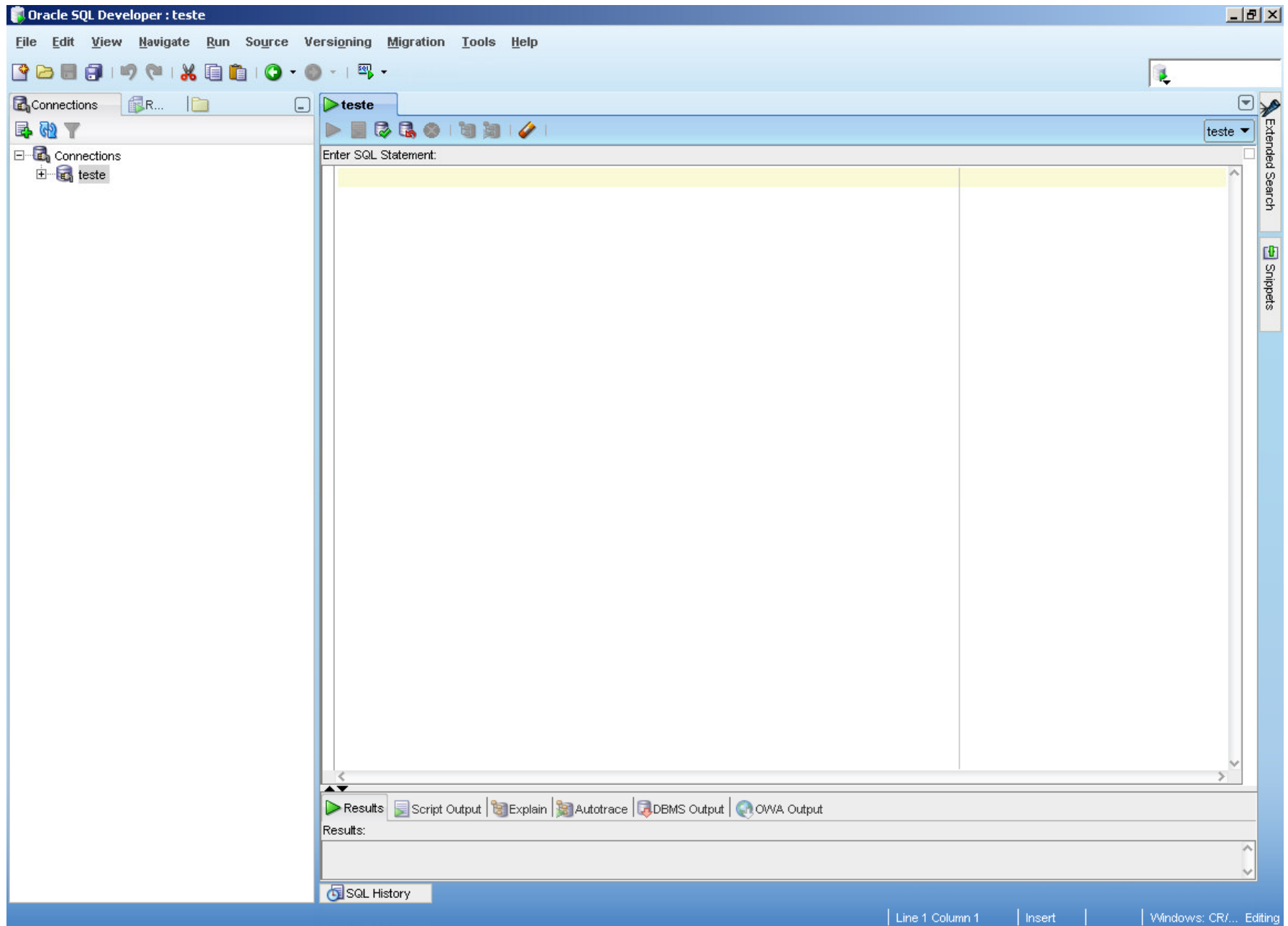
New / Select Database Connection

Connectio...	Connectio...	Connection Name	teste
server	sys@//19...	Username	username
		Password	*****
		<input type="checkbox"/> Save Password	
		Oracle Access	
		Role	default
		<input type="checkbox"/> OS Authentication	
		Connection Type	Basic
		<input type="checkbox"/> Proxy Connection	
		Hostname	localhost
		Port	1521
		<input checked="" type="radio"/> SID	orcl
		<input type="radio"/> Service name	

Status : Success

Auxílio Save Clear Test **Connect** Cancelar

Clique aqui



Conexão estabelecida no oracle do servidor!